

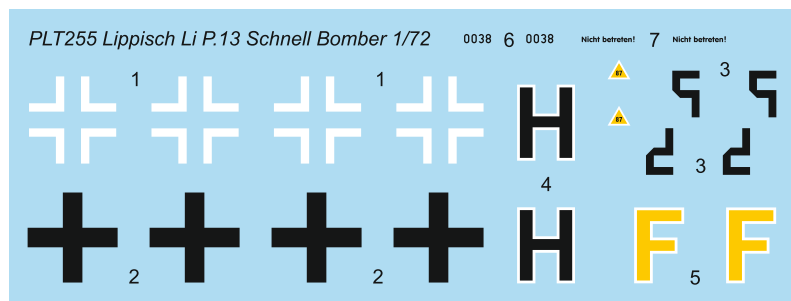
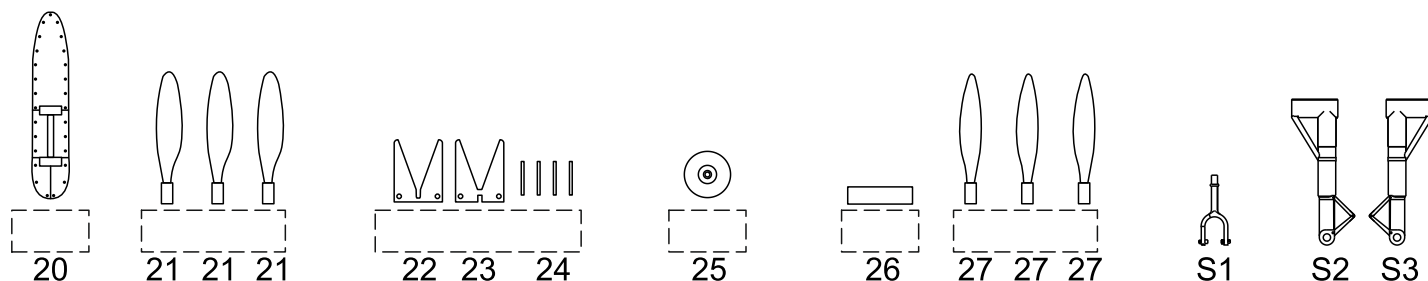
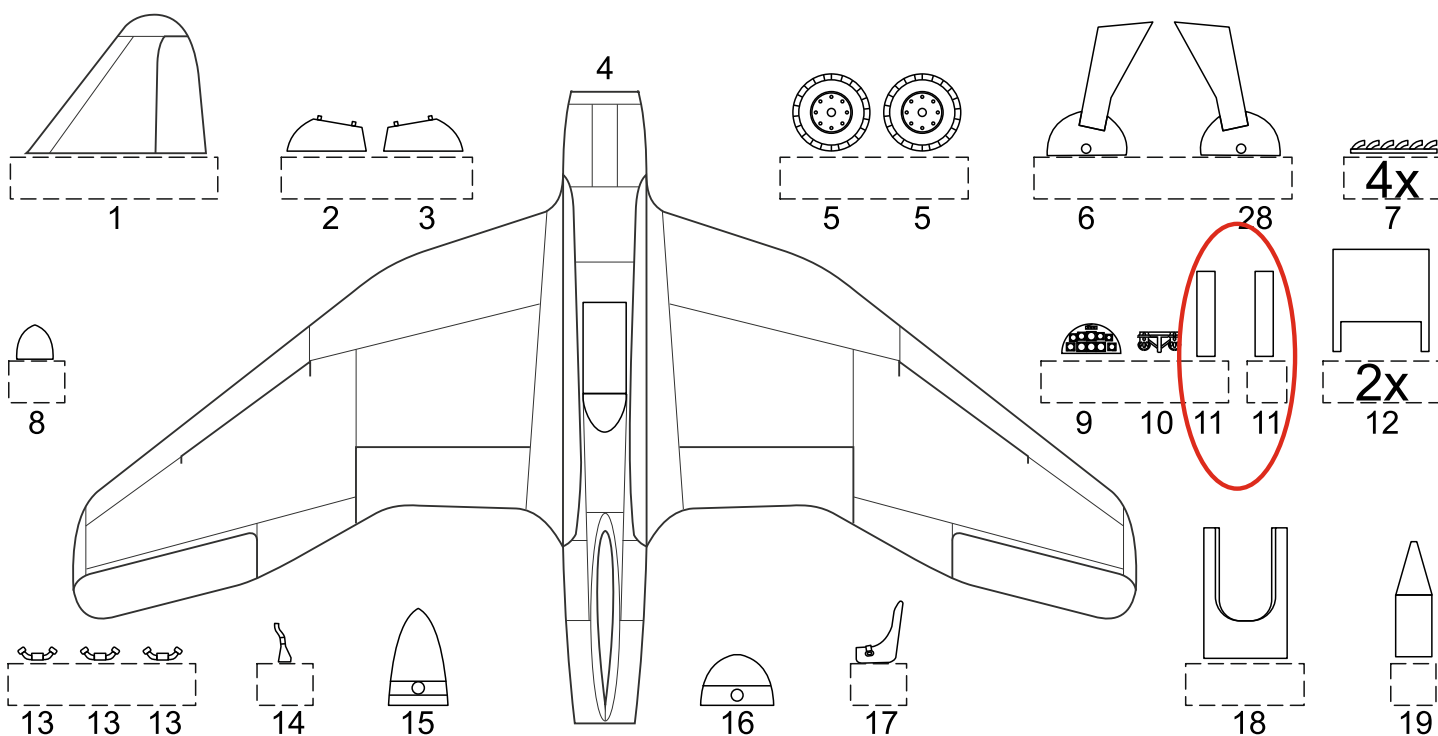
The Lippisch P.13 project was developed in the aeronautics department of the Messerschmitt Concern under the leadership of Dipl.Ing. Josef Hubert. Design work had begun in 1942 and when Lippisch's design office of the concern was shut down at the end of April 1943, work on the P.13 was stopped, too. The P.13 designation was later given to different projects.

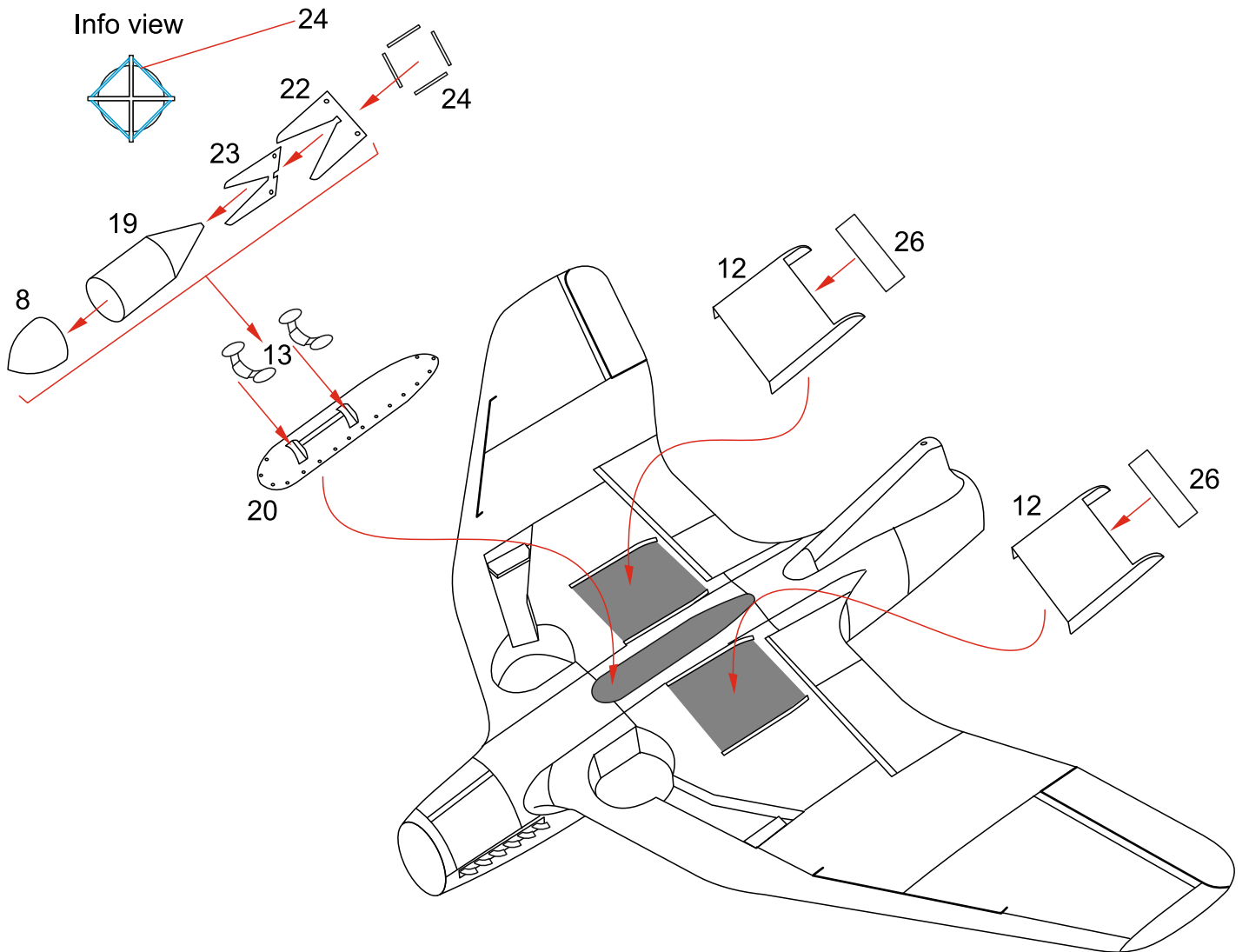
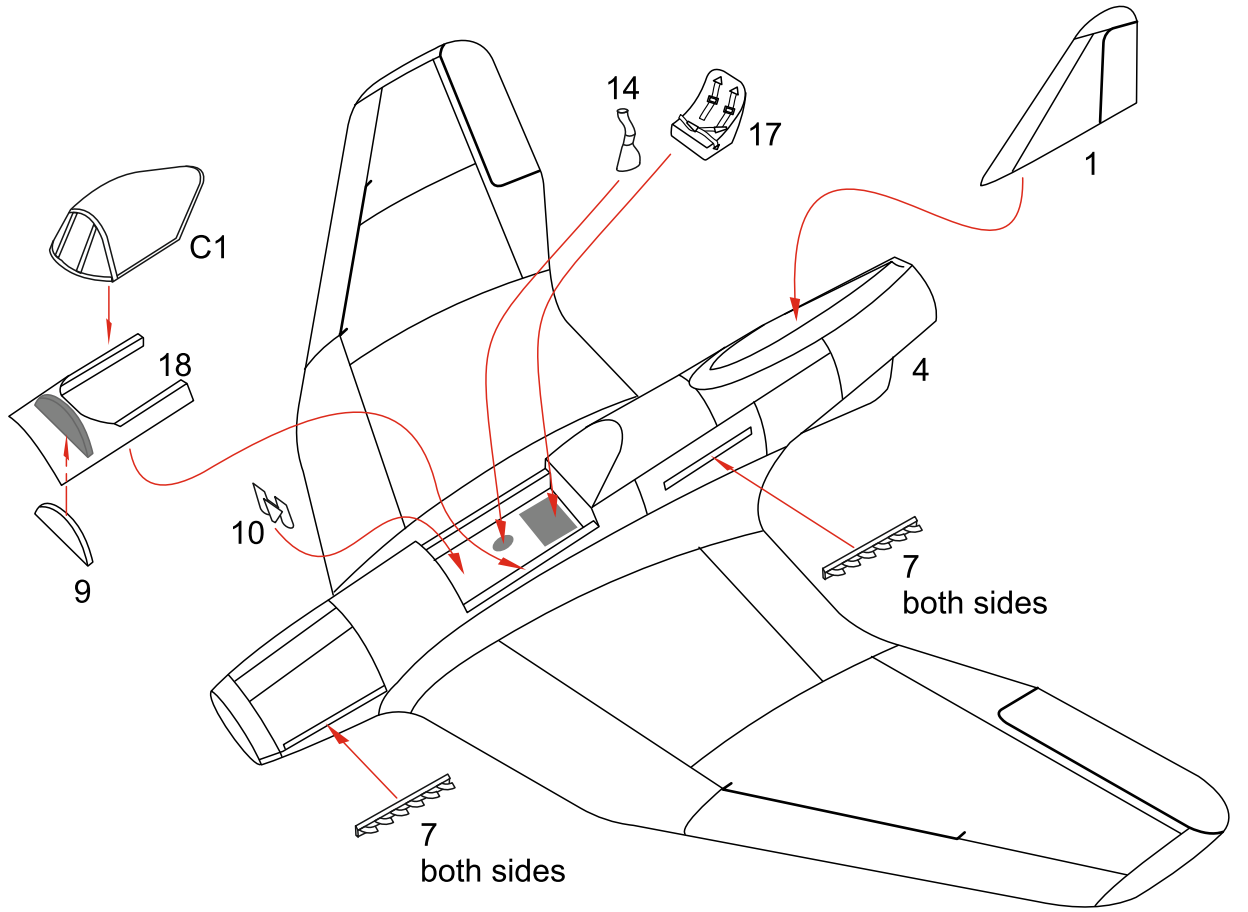
The all-wing (tailless) P.13 project was planned to be a fast bomber aircraft, the wing had a twice bent leading edge with the sweep angle of 18° and 32° respectively. The plane was to be powered by a pair of DB 605B engines, one in standard position at the nose, the other one in a pusher configuration in the rear fuselage with the propeller behind the tail driven by a long shaft. The expected high speed of the aircraft was to ensure safety from allied fighters and so the plane was not to be armed with any gun armament. The bomb load was to be carried on an underbelly pylon. Wingspan: 12.8m, length: 9.4m

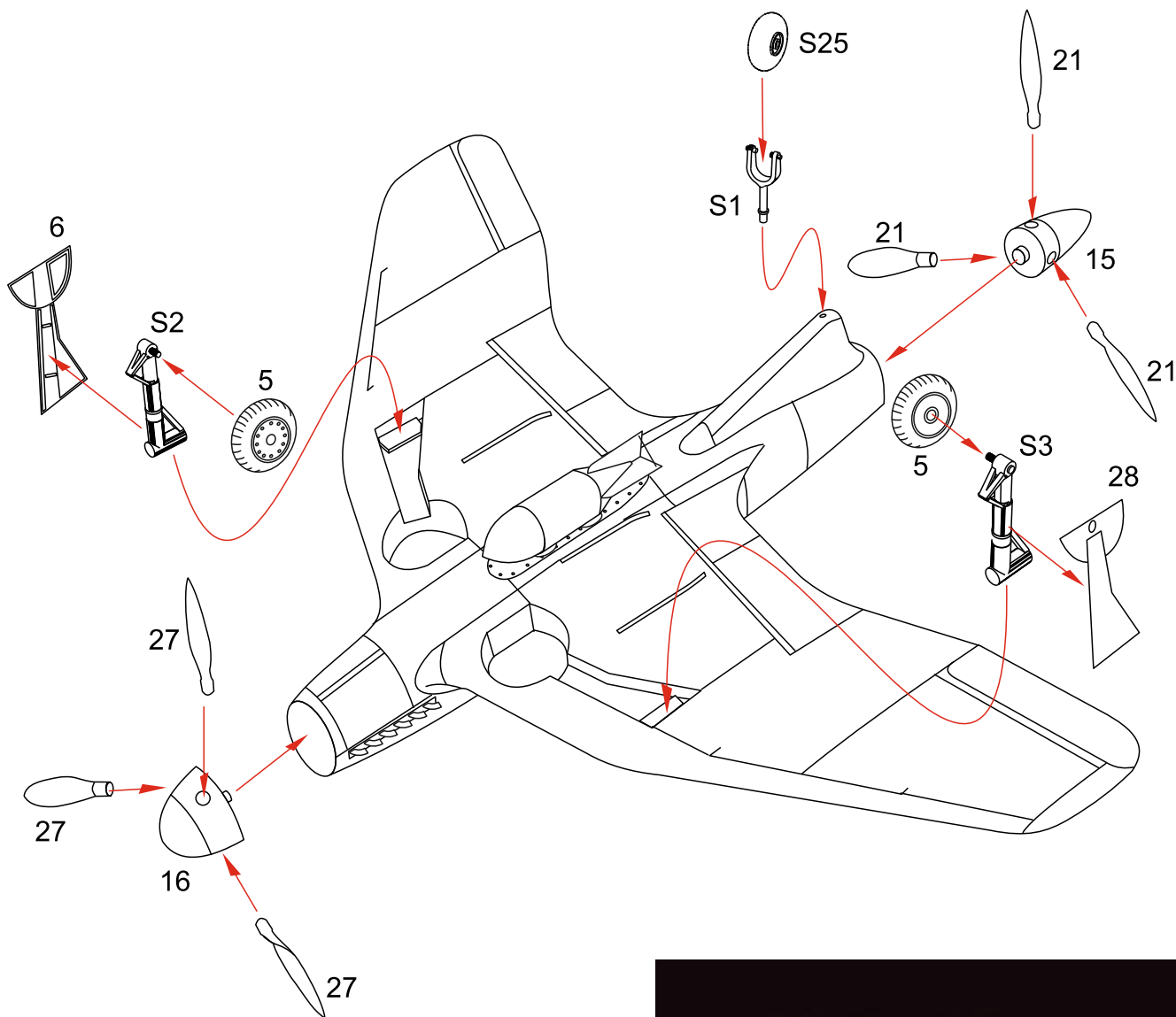
Projekt Lippisch P.13 vznikl pod vedením šéfa Lippischova aerodynamického oddělení Dipl. Ing Josefa Huberta v rámci koncernu Messerschmitt. Práce na něm probíhaly v roce 1942. Po zrušení Lippischovy konstrukční kanceláře na konci dubna 1943 v rámci koncernu se práce na P.13 zastavily. Později toto označení dostaly zcela jiné projekty.

Tento bezocasý projekt byl navržen jako rychlý bombardér. Křídlo mělo dvakrát lomenou náběžnou hranu, v úhlech 18° a 32°. Pohon měly zajistit dva motory DB 605B. Jeden měl být namontován klasicky v přídí, druhý jako tlačný s prodlouženou hřídelí měl pohánět vrtuli za svislou ocasní plochou. Vysoká rychlost měla zajistit bezpečnost před stíhačkami nepřítele, proto letoun neměl nést hlavní výzbroj. Pro nesení pum bylo počítáno s pumovým závěsníkem pod trupem.

Rozpětí: 12,8 m, délka: 9,4 m







1/48 PLT283
1/72 PLT281

Tai-atari Yūyoku Funshindan

Japanese Rocket Plane (project 1 and 2)

Detailed 3D printed kit (2 pcs)



1/72
P72023

MEN'S BICYCLE

First half of 20th century (3 pcs)

3D-Printed Parts



1/72
P72023

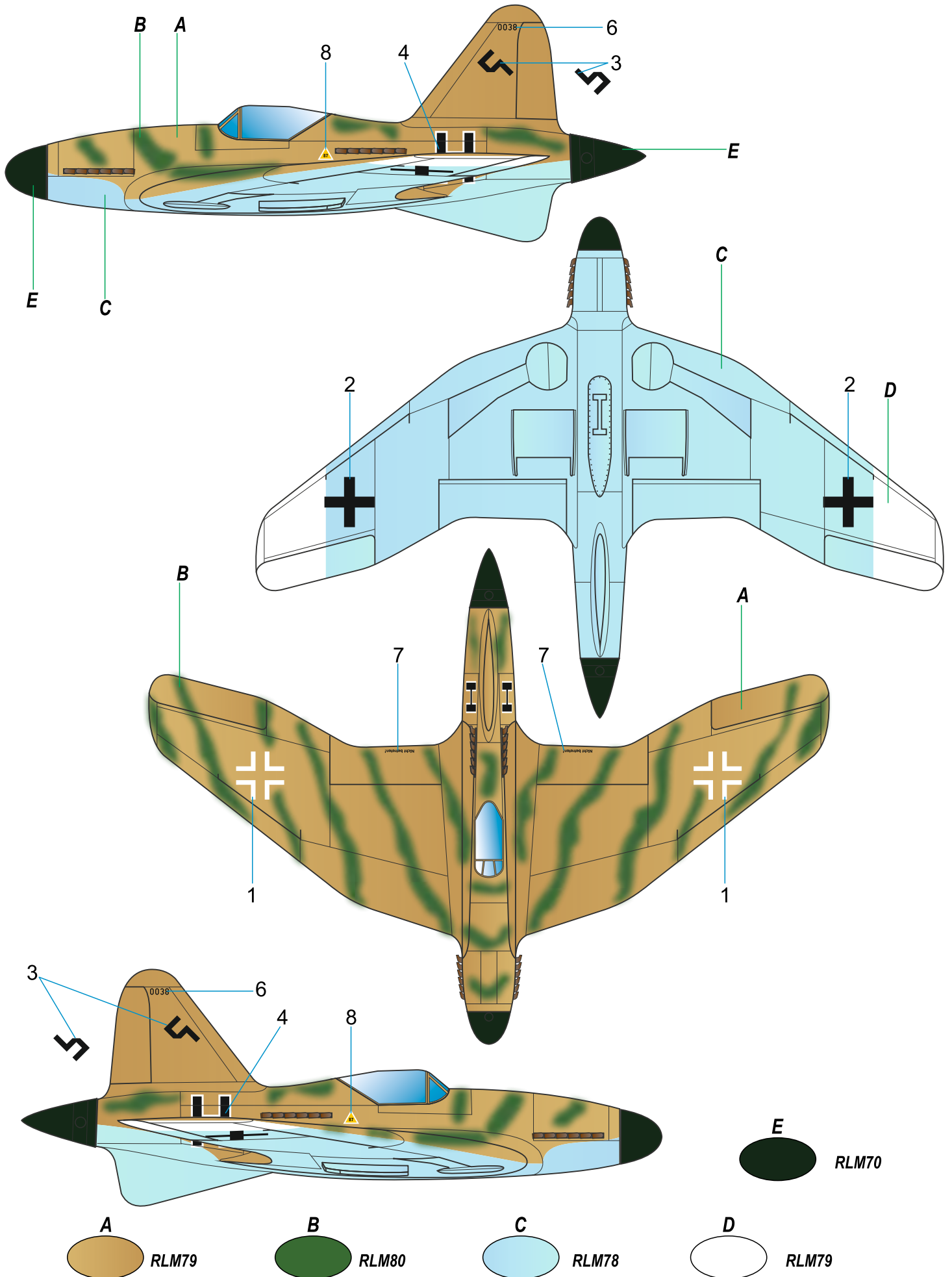
WOMEN'S BICYCLE

First half of 20th century (3 pcs)

3D-Printed Parts

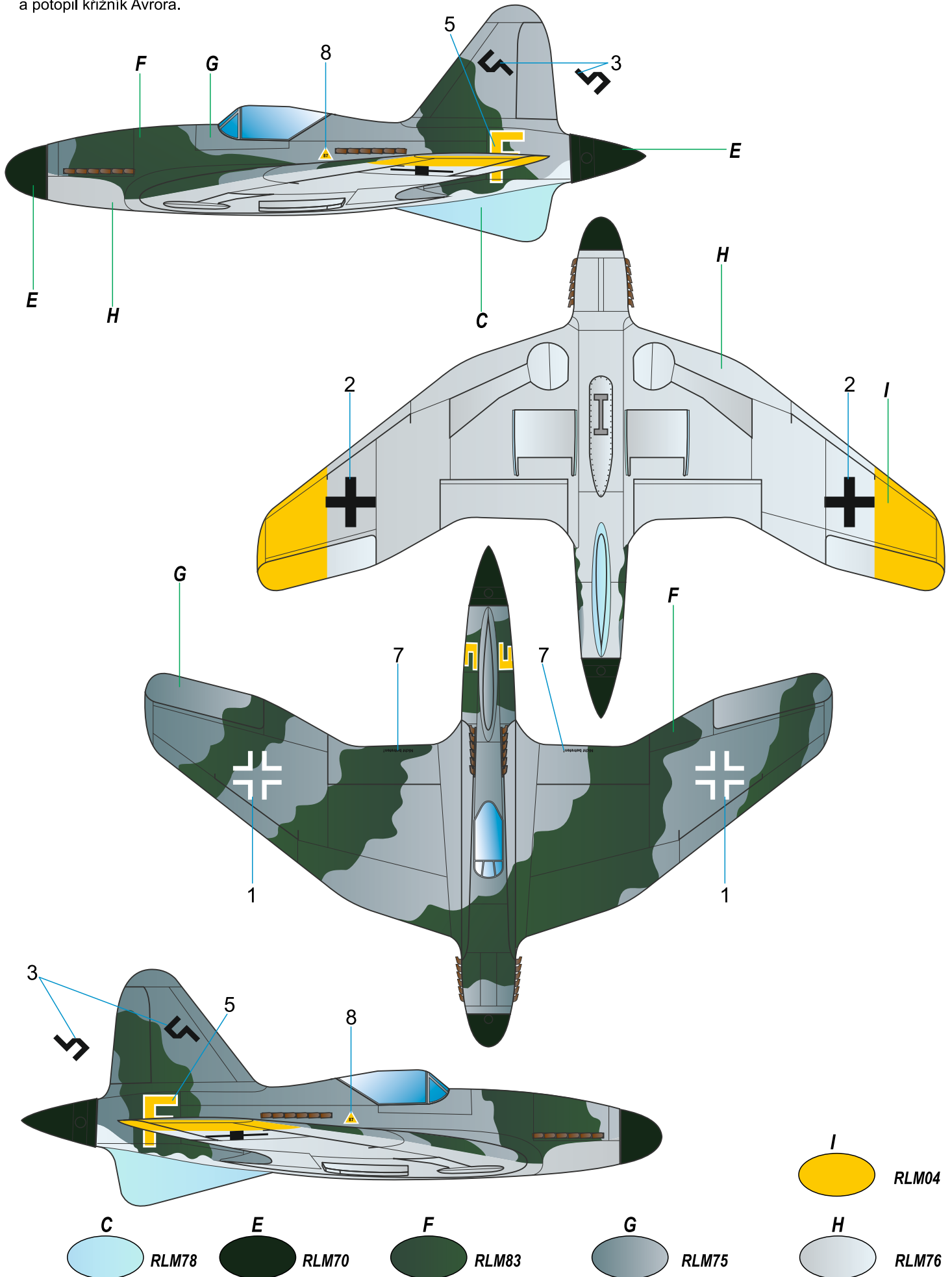
Lippisch P.13, Sonderkommando Kleinstein, secret airfield south of Qasr Ghilan, Tunisia, Spring 1946.

Lippisch P.13, Sonderkommando Kleinstein, tajné letiště jižně od Qasr Ghilan, Tunis, jaro 1946.



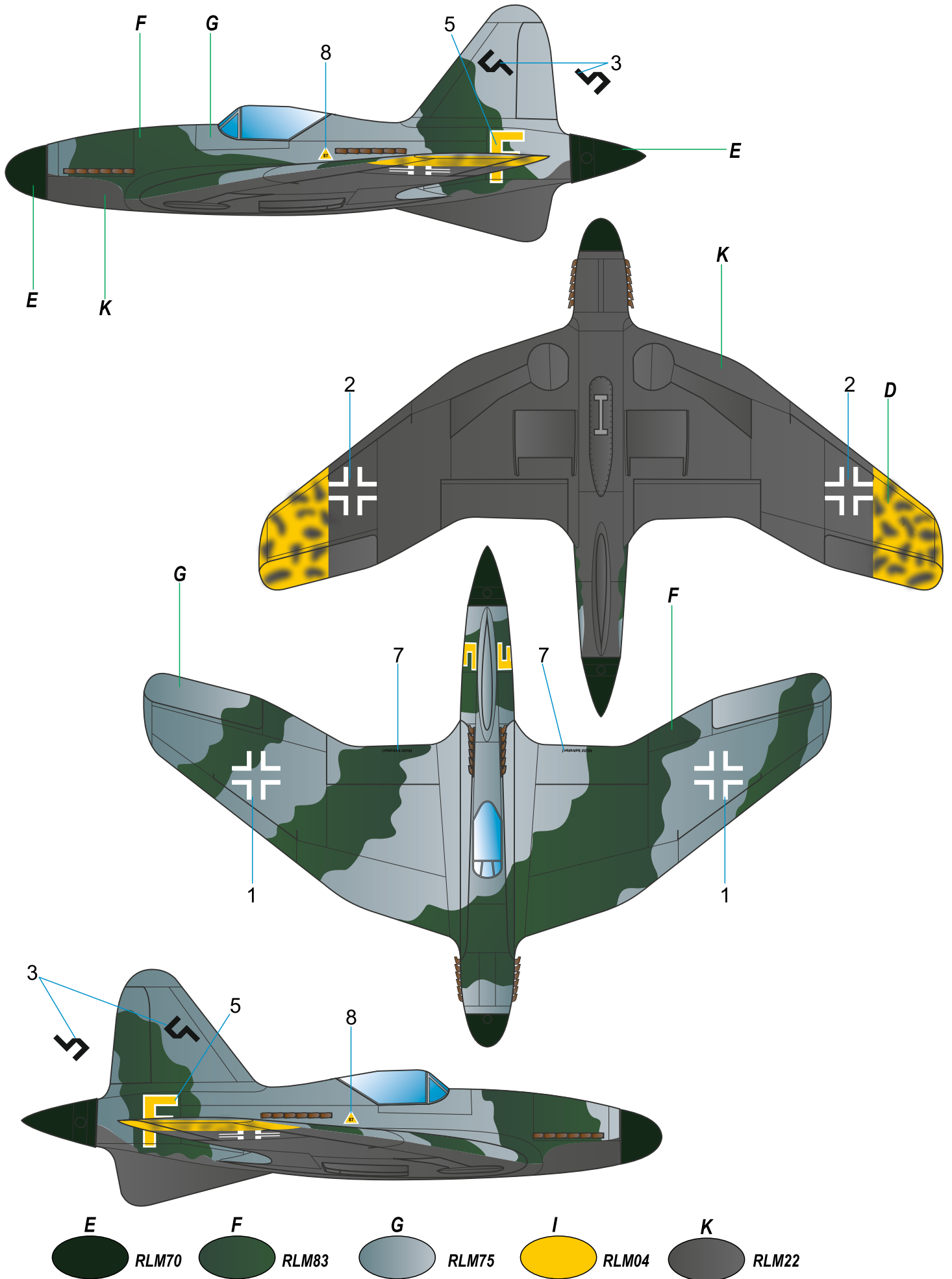
Lippisch P.13, II./KG100 Wiking, Wolossowo II airfield, occupied territory of the USSR, Autumn 1945. The aircraft was test used in day-time hit and run attacks on the city of Leningrad during one of which its pilot hit and eventually also sunk the cruiser Avrora.

Lippisch P.13, II./KG100 Wiking, letiště Wolossowo II, okupované území SSSR, podzim 1945. Letoun byl testován při denních akcích udeř a uteč při útocích na Leningrad. Při jedné z akcí zasáhl pumou a potopil křižník Avrora.



Lippisch P.13, II./KG100 Wiking, Wolossowo II airfield, occupied territory of the USSR, Winter 1945.
 For night missions, the aircraft lower surfaces were painted black.

Lippisch P.13, II./KG100 Wiking, letiště Wolossowo II, okupované území SSSR, zima 1945. Letoun dostal pro noční akce černý nátěr spodních ploch.



1/32
SH32067
HI-TECH KIT

Yakovlev Yak-3 'Normandie-Niemen'

Hi-Tech release contains also resin parts, photo etched parts, large decal sheet and masks.

1/48
SH48207

SIAI-Marchetti SF.260AM/M/W

M48024
SIAI-Marchetti SF-260M/AM/W
INSIDE/OUTSIDE MASK

Special
MASK

1/72
SH72500

Fokker D.21 'Against Messerschmitts'

Release contains also resin parts, 3D-printed parts, photo etched parts and decal.

1/72
SH72501

Seafire FR MK.47 'The Last Royal Navy Propeller Fighter'

M72048 Spitfire Mk.22/24
and Seafire Mk.46/47 MASK

Release contains also photo etched parts.

Special
MASK

special
HOBBY

facebook.com/specialhobby
WWW.SPECIALHOBBY.EU | WWW.CMKKITS.COM

CMK
CZECH
MASTER'S KITS

1/72 TEMPEST Mk.V



3D PRINTED AND RESIN SETS FOR AIRFIX KIT

Q72413
Tempest/Typhoon
Early type Wheels



Q72414
Tempest Late Type Wheels

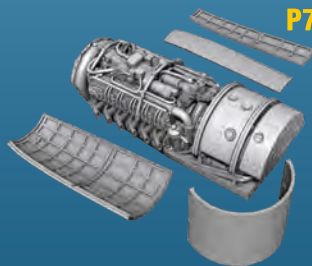


P72011
Tempest Mk.V Exhausts



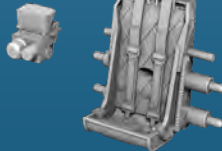
P72009 Tempest Mk.V
Early Gun Barrels

P72008 Tempest Mk.V Engine
and Fuselage Tanks



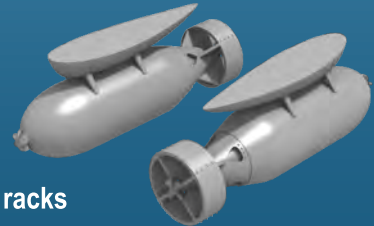
P72010

Tempest Mk.V Gun Sight and
Seat Correction Set



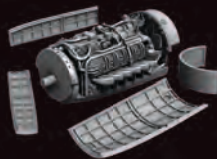
P72021

Tempest
Bombs and racks



1/72 TYPHOON MK.I 3D PRINTED SETS FOR AIRFIX KIT

P72012
Typhoon Mk.I Engine



P72013
Typhoon Mk.I Gun Sight
and Seat Correction Set



P72014
Typhoon Mk.I
Three-blade Propeller



P72015
Typhoon Mk.I Gun Bays



P72016
Typhoon Mk.I
Standard Exhausts



P72017
Typhoon Mk.I
Late Type
Shrouded Exhausts



P72022
Typhoon Mk.I
Tailwheel
w/Leg



F72402
Tempest Pilot, Dog and Mechanic
with Accumulator Trolley



H1020 Razor Saw Profi Set



A new type handle for
our razor saws.

Also contains H1018 and H1019 spare saws.

H1018
Triangle Razor Saw (1pc)



H1019
Multi-Shift Razor Saw (1pc)

