

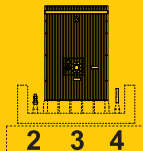
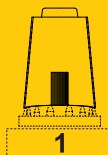
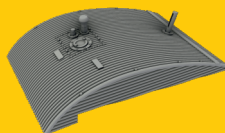
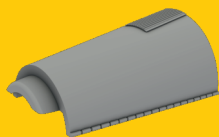
4410
1/48

DH.82 Tiger Moth Exterior Set

for Airfix kit



PUR - Polyurethane parts



© Special Hobby 2020

Díly ohnuté popř. pokroucené vlivem teplotních změn a stárnutí materiálu, mohou být narovnané do požadovaného tvaru pomocí proudu teplé vody nebo vzduchu (fén na vlasy).

Parts slightly distorted and bent owing to temperature changes or due to material ageing can be straightened to requested shape by hot water or hot air jet. (hair dryer)

This process can be repeated till result is entirely satisfactory.

*K lepení použít kyanoakrylátové lepidlo!
For best result gluing use cyanoacrylate glue!*

*Kontaktní plochy doporučujeme před lepením odmastit
Contact areas ungrease is recommended before gluing.*

Visit our official website and e-shop at
www.cmkkits.com

www.specialhobby.eu

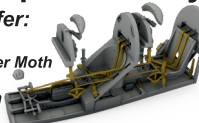
www.facebook.com/specialhobby/

for 1/48 Tiger Moth we also offer:

129-4413
DH.82
Tiger Moth
Mainwheels
and Tailskid



129-4407
DH.82 Tiger Moth
Cockpit
Correction
Set



129-4409
DH.82 Tiger Moth
Luggage Box



129-4412
DH.82 Tiger Moth
Cockpit Entry
Hatches (4pcs, open)

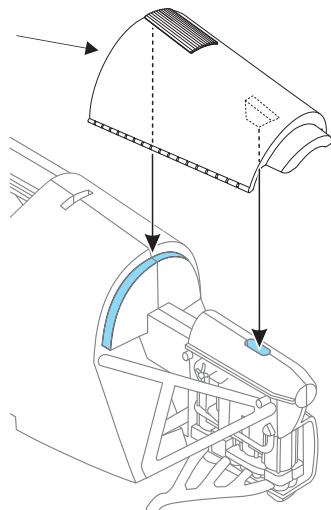


and other sets ...

Special Hobby, Mezilesí 718, Praha 9, 193 00, Czech Republic
e-mail: office@specialhobby.eu

krok 14 v návodu stavěbnice
step 14 in kit instructions

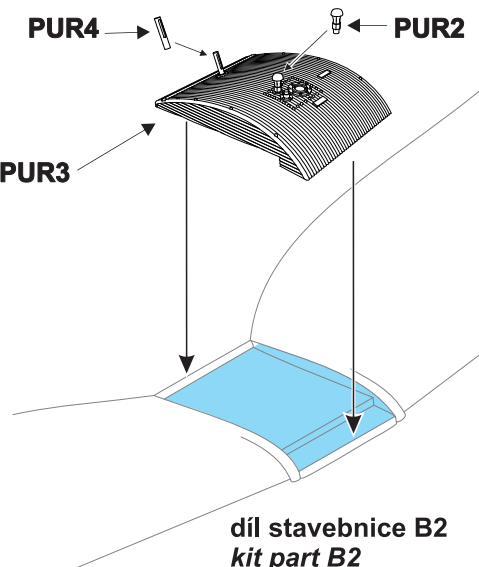
PUR1



PUR4

PUR2

PUR3



díl stavěbnice B2
kit part B2