

special special special special special
HOBBY HOBBY HOBBY HOBBY HOBBY



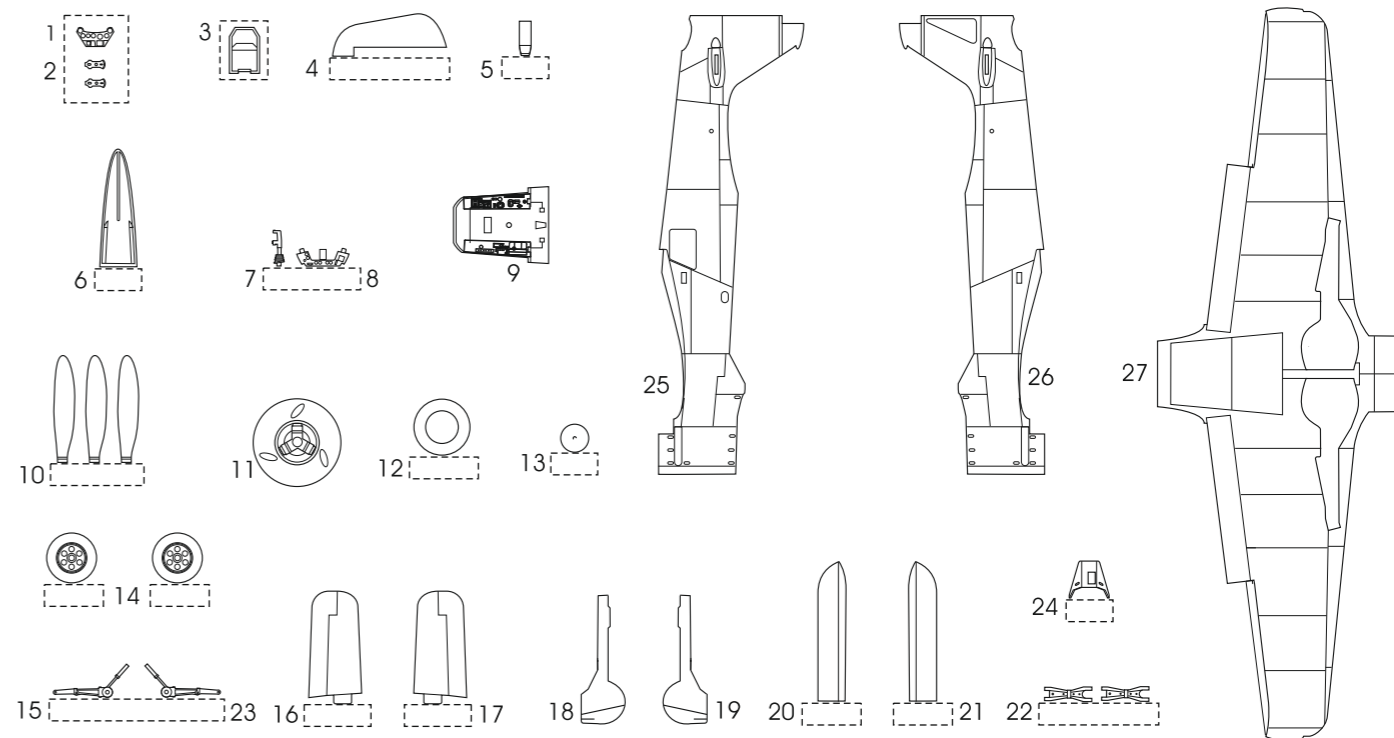
RS-009

The First Prototype

Focke Wulf Fw 190V-1



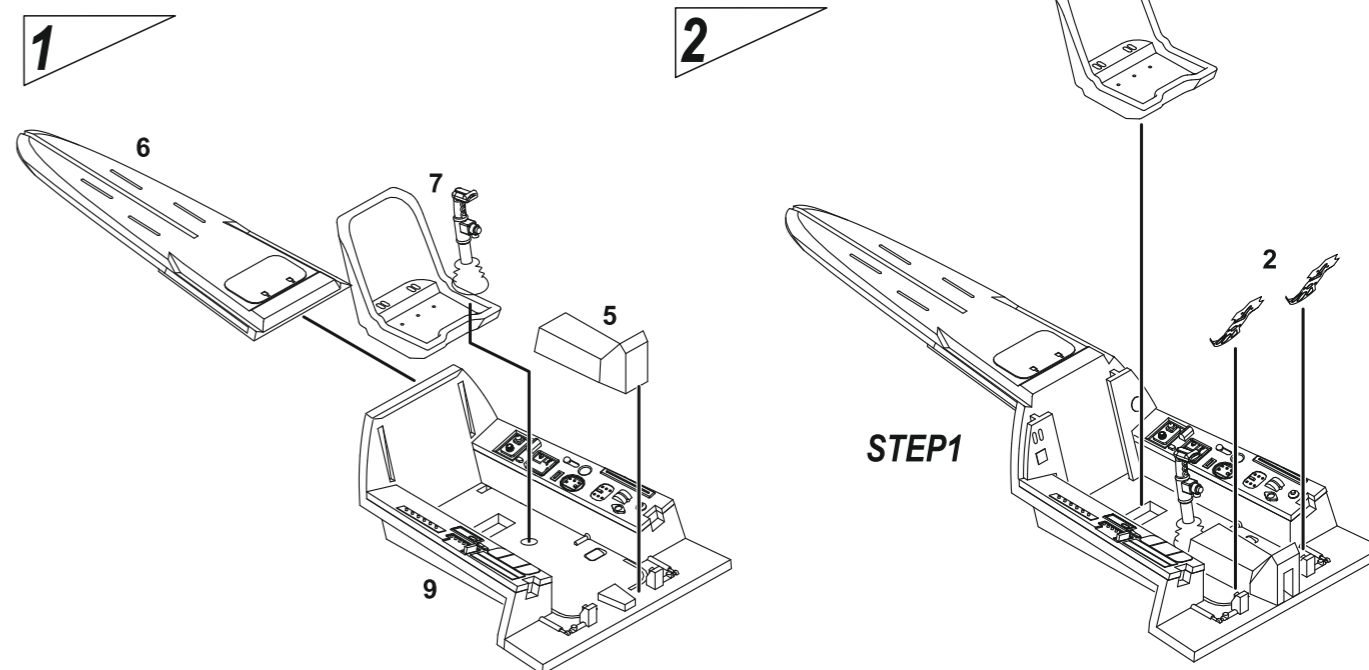
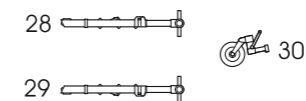
POLYURETHANE PARTS



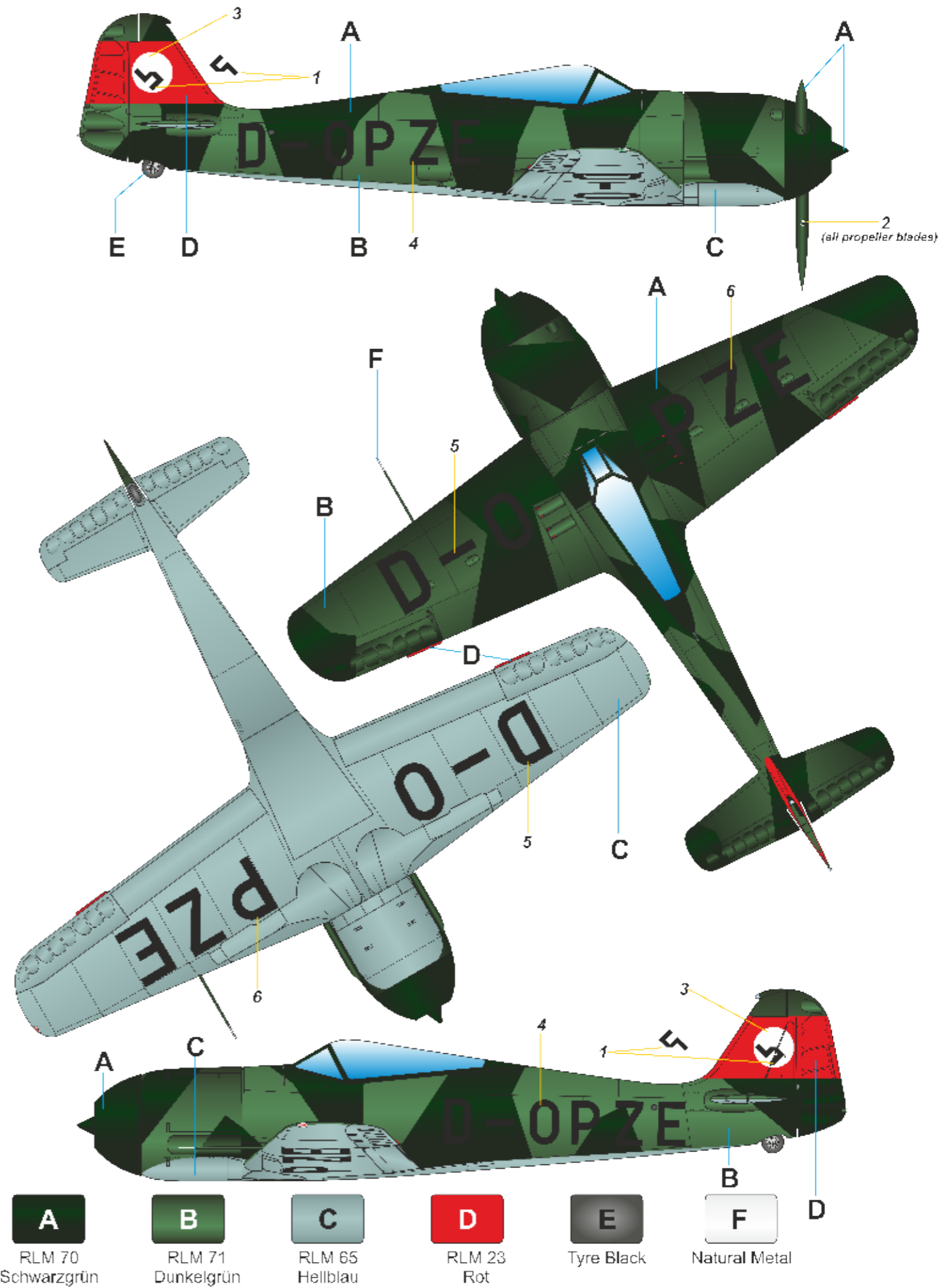
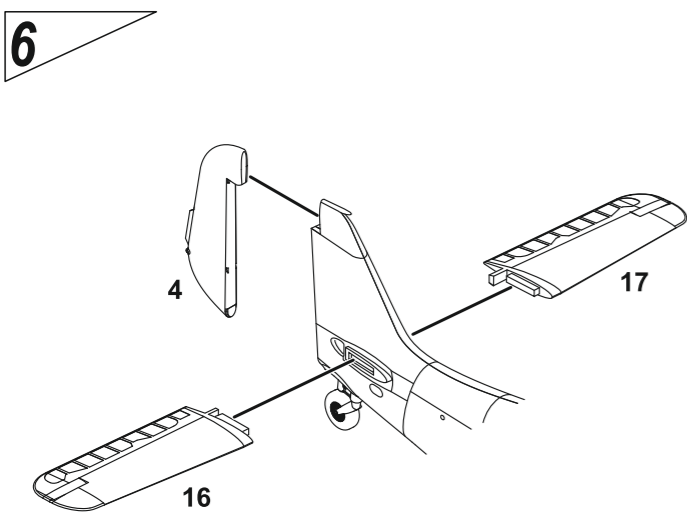
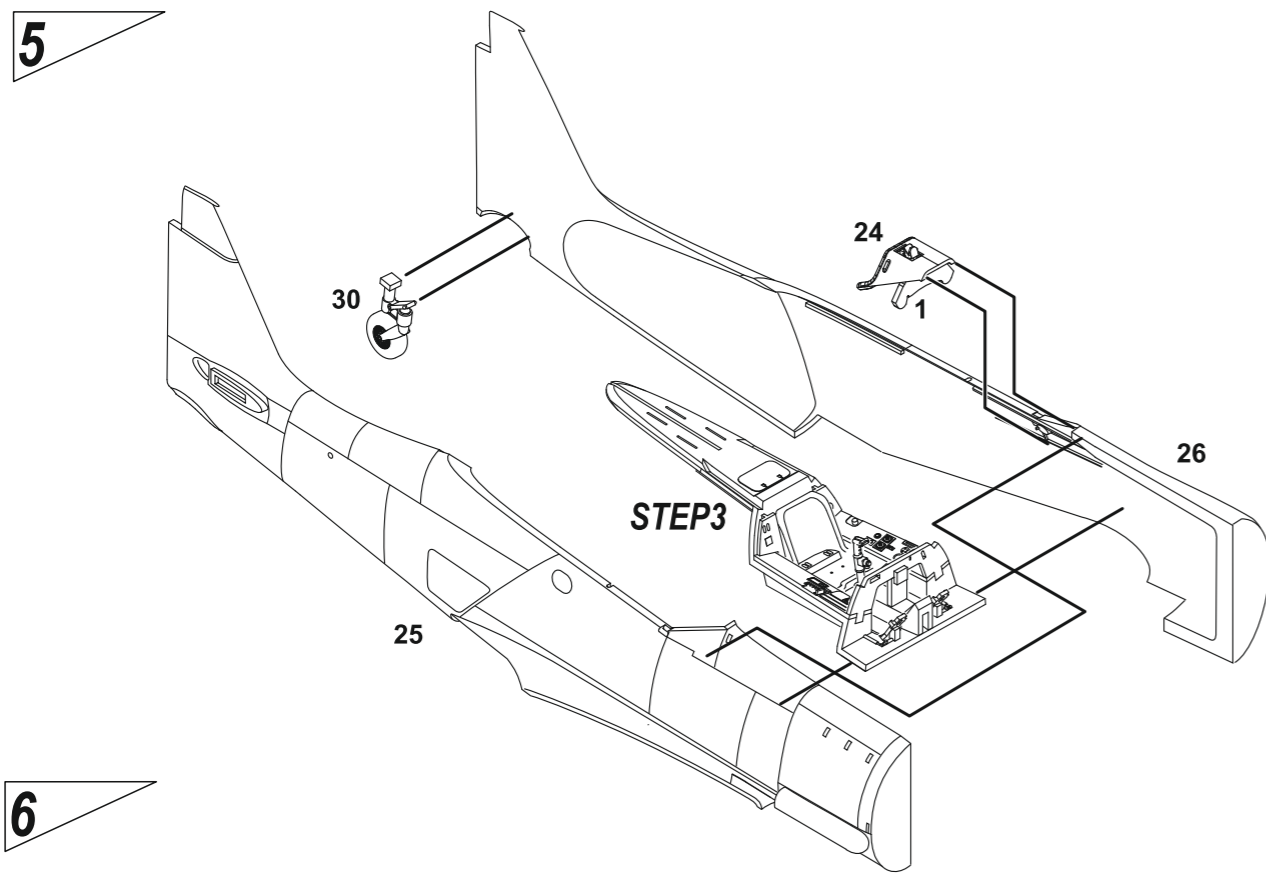
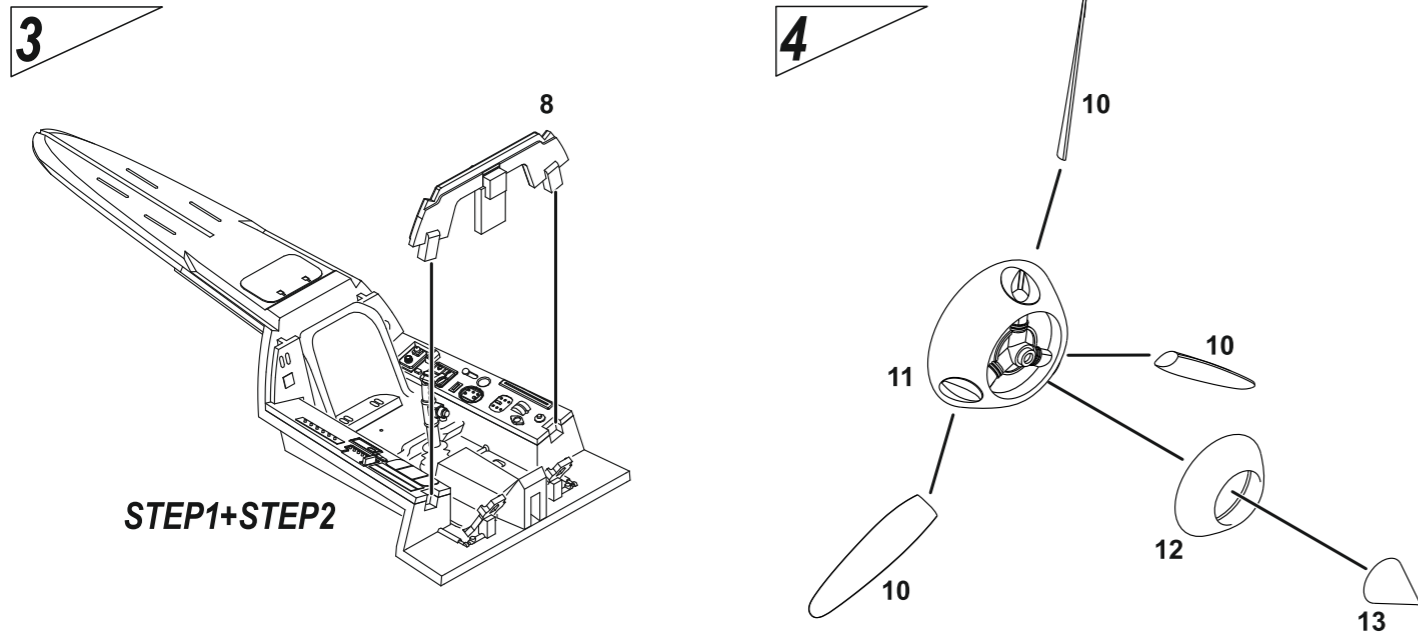
TRANSPARENT PART



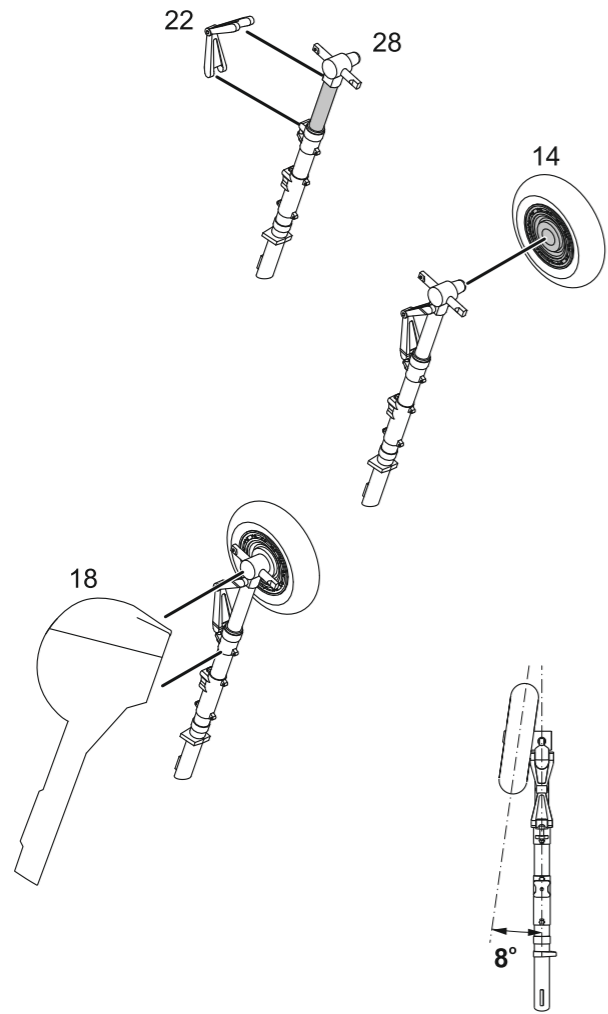
METAL PARTS



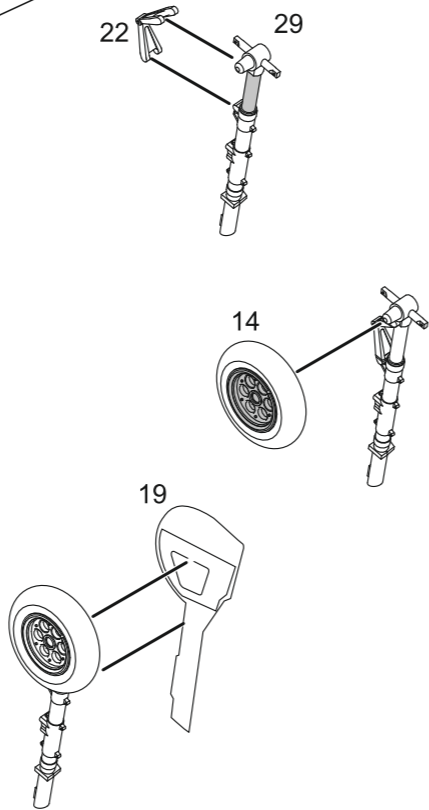
Focke Wulf Fw 190V-1 as was shown to the Luftwaffe top brass at Erprobungsstelle facility in Rechlin, Autumn 1939.



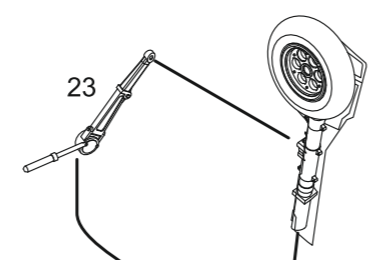
8



9

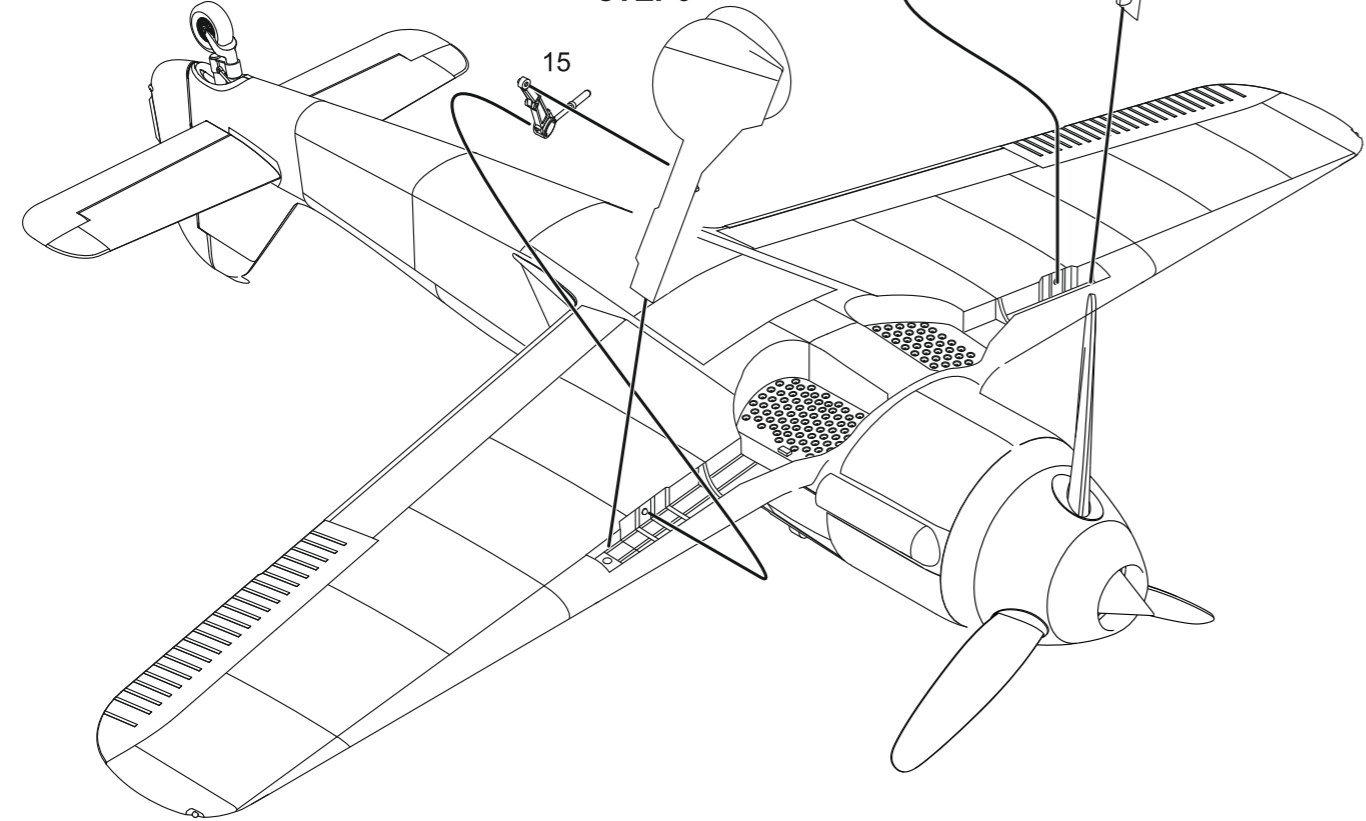


STEP9

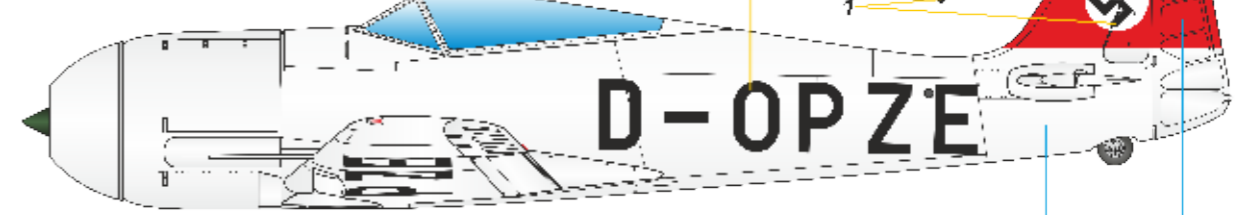
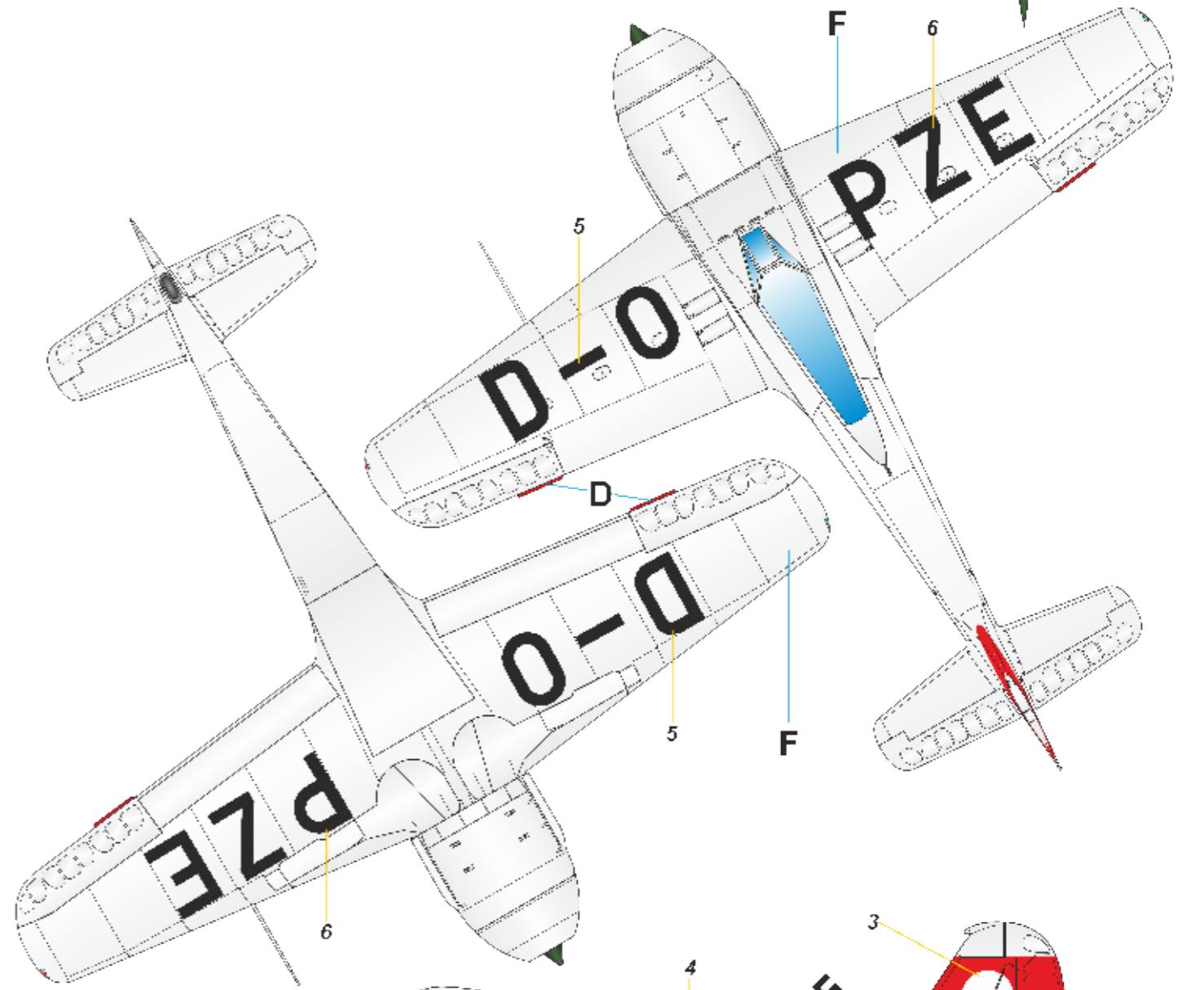
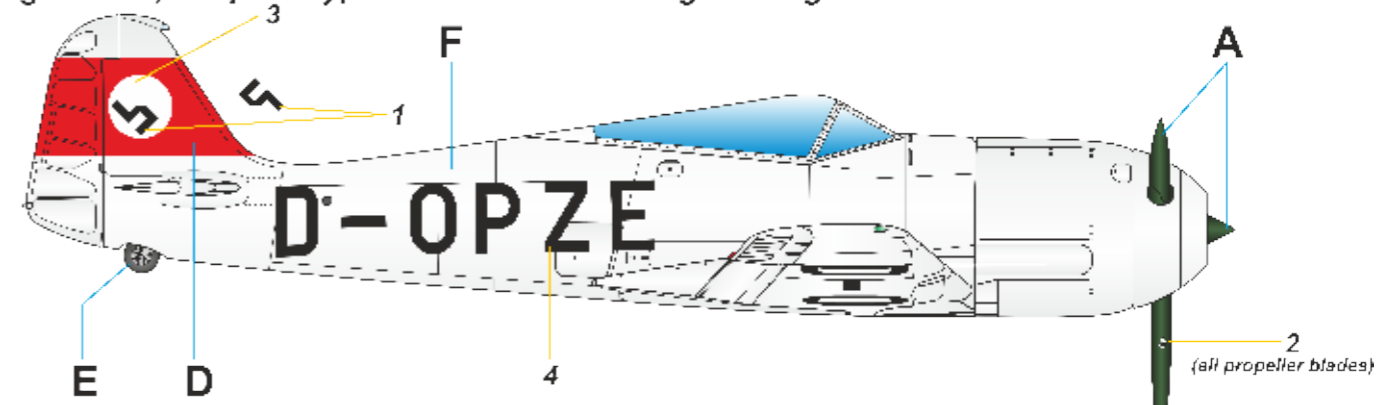


10

STEP8



Focke Wulf Fw 190V-1, factory airfield, Bremen, Summer 1939. The Fw 190V-1 was first flown on 1 June, 1939 with the Focke Wulf's Chief Test Pilot Ing.Hans Sander at the controls. During the flight trials, the prototype carried civil marking and registration.



- A

RLM 70
Schwarzgrün
- D

RLM 23
Rot
- E

Tyre Black
- F

Natural Metal