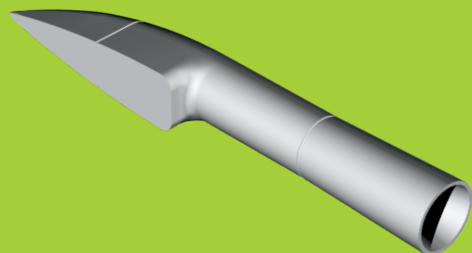
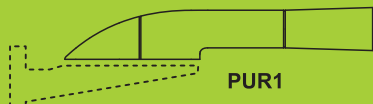


Q48366 Reggiane Re 2005
1/48 Supercharger Air Intake
for Special Hobby kit



PUR - Polyurethane parts



© Special Hobby 2020

Díly ohnuté popř. pokroucené vlivem teplotních změn a stárnutí materiálu, mohou být narovnané do požadovaného tvaru pomocí proudu teplé vody nebo vzduchu (fén na vlasy).

Parts slightly distorted and bent owing to temperature changes or due to material ageing can be straightened to requested shape by hot water or hot air jet. (hair dryer)

This process can be repeated till result is entirely satisfactory.

*K lepení použít kyanoakrylátové lepidlo!
 For best result gluing use cyanoacrylate glue!*

*Kontaktní plochy doporučujeme před lepením odmastit
 Contact areas ungrease is recommended before gluing.*

Visit our official website and e-shop at
www.cmkkits.com

www.specialhobby.eu

www.facebook.com/specialhobby/

Other CMK sets for 1/48 Special Hobby Reggiane Re.2005

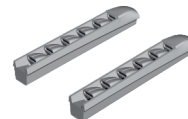
Q48364
Reggiane Re 2005
Main Wheels



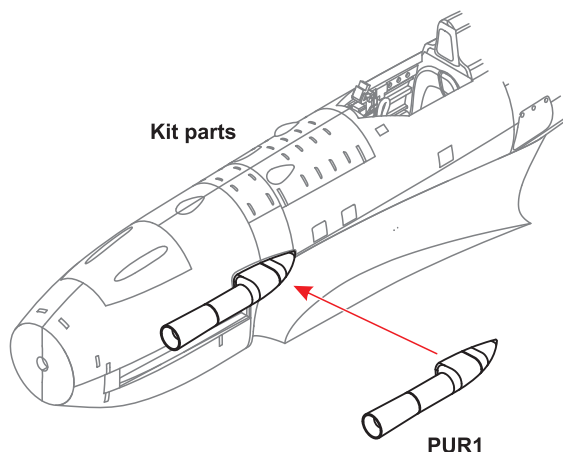
Q48365
Reggiane Re 2005
Tailwheel
with Strengthened
Leg



Q48367
Reggiane Re 2005
Exhausts



Special Hobby, Mezilesí 718, Praha 9, 193 00, Czech Republic
 e-mail: office@specialhobby.eu



1/48 Italian planes offered by Special Hobby



SH48137
IMAM (Romeo) Ro.43
'Red Striped'

SH48140
IMAM (Romeo) Ro.44
'Italian Float Fighter'



SH48204
Reggiane Re 2000 Serie I

SH48208
J-20/Héja I
'Re 2000 Export Birds'



www.specialhobby.eu