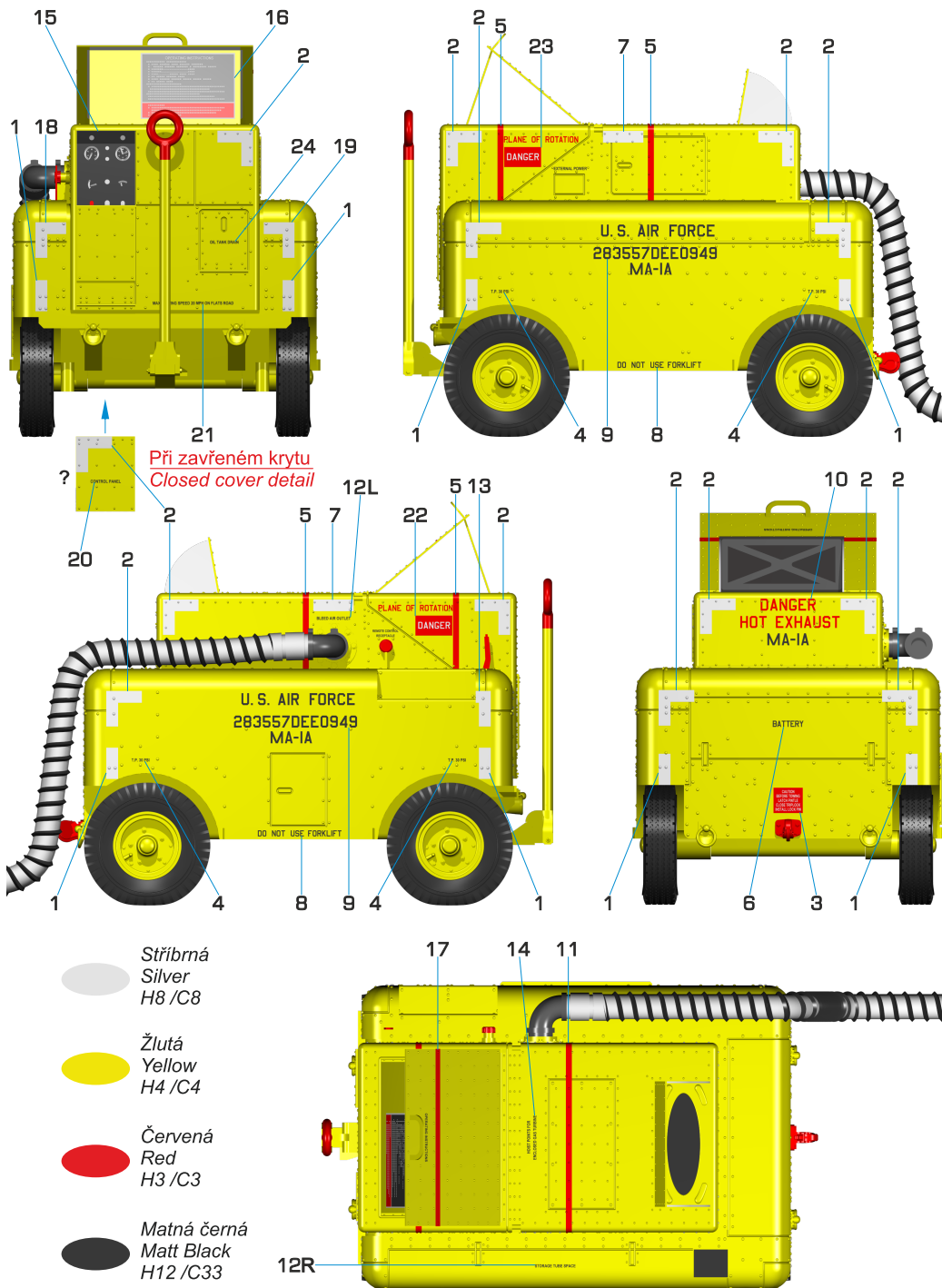


## Zbarvení/ Colour & Marking Guide



## Resin kit

No 8054

1/48

### MA-1A USAF Start Cart

Navštivte naše stránky / Visit our official website [www.cmkkits.com](http://www.cmkkits.com)

PUR - Polyurethane parts

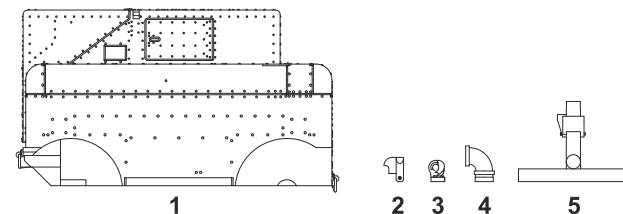
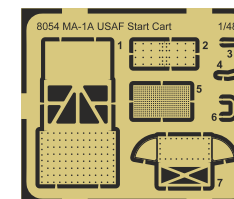
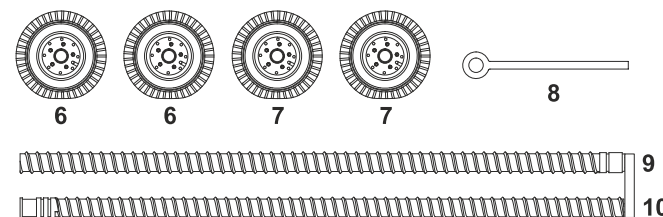
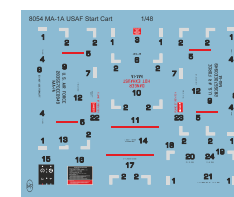


Photo-Etched parts



Decals



Díly ohnuté popř. pokroucené vlivem teplotních změn a stárnutí materiálu, mohou být narovnány do požadovaného tvaru pomocí proudu teplé vody nebo vzduchu (fén na vlasy). Různé drátky a tyčinky nejsou přiloženy. K lepení použijte kyanoakrylátové lepidlo. Kontaktní plochy doporučujeme před lepením odmastit.

Parts slightly distorted and bended owing to temperature changes or due to material ageing can be straightened to requested shape by hot water or hot air jet (hair dryer). This process can be repeated till result is entirely satisfactory. Wires and rods not included. For best results use cyanoacrylate glue. It is recommended to ungrease contact areas before gluing.

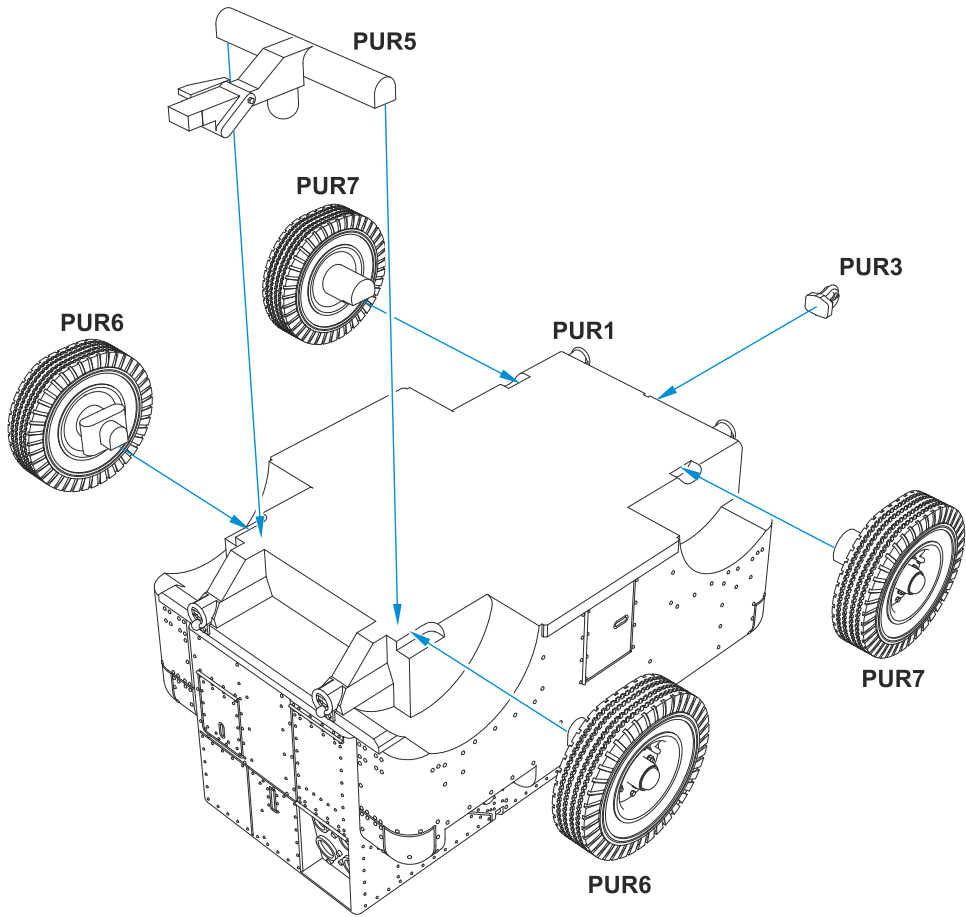
### NEW ITEMS - 1:48 SETS

- 4145 F-86 Sabre - Interior set for Hasegawa kit
- 4145 F-86 Sabre - Armament set for Hasegawa kit
- 4145 F-86 Sabre - Undercarriage set for Hasegawa kit
- Q48 268 RF-84F Thunderflash – 1/48 Correction Martin Baker GY5/GT5 Seat with Harness for Tanmodel kit
- Q48 269 RF-84F Thunderflash – 1/48 Correction Martin Baker GY5/GT5 Seat for Tanmodel kit
- Q48 270 RF-84F Thunderflash – 1/48 Correction Wing Flaps for Tanmodel kit
- Q48 271 RF-84F Thunderflash – 1/48 Correction Wing Ailerons for Tanmodel kit

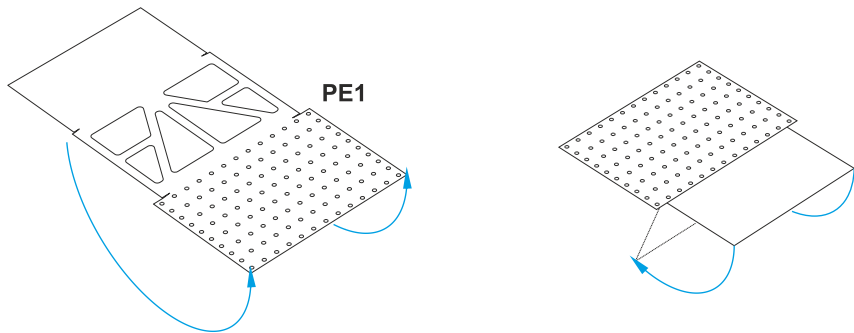
Special Hobby, Mezilesí 718, Praha 9 - CZECH REPUBLIC, e-mail: [office@specialhobby.eu](mailto:office@specialhobby.eu)

# Sestava/ Assembly

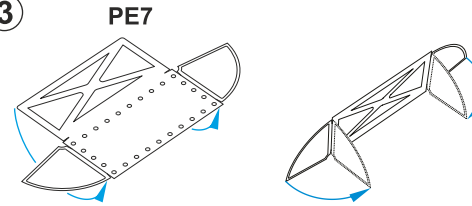
1



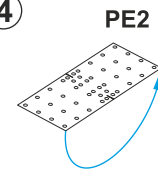
2



3



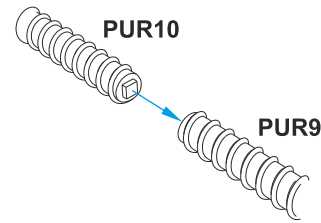
4



5



6



Pro formování hadice použijte vařící vodu, aplikujte ji na ohýbaná místa  
 Form the hosepipe to a shape using boiling water applied at the bends

