

**Q32 244 Tempest Mk.V /Typhoon Mk.I
1/32
- Tail Wheel
with Strengthened Leg**
Set for Special Hobby/Pacific Coast/Revell kits



PUR - Polyurethane parts

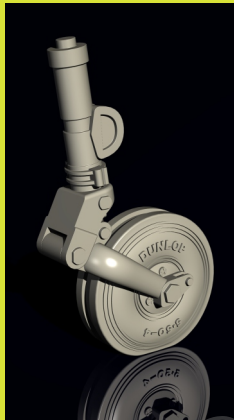


1



2

© Special Hobby 2016



Díly ohnuté popř. pokroucené vlivem teplotních změn a stárnutí materiálu, mohou být narovnány do požadovaného tvaru pomocí proudu teplé vody nebo vzduchu (fén na vlasy).

Parts slightly distorted and bent owing to temperature changes or due to material ageing can be straightened to requested shape by hot water or hot air jet. (hair dryer)

This process can be repeated till result is entirely satisfactory.

K lepení použít kyanoakrylátové lepidlo!

For best result gluing use cyanoacrylate glue!

Kontaktní plochy doporučujeme před lepením odmastit

Contact areas ungrease is recommended before gluing.

Visit our official website and e-shop at

www.cmkkits.com

www.specialhobby.eu



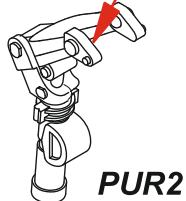
NEW ITEMS - 1:32 SETS

- Q32 240 Tempest Mk. II/V/VI - Control column
- Q32 241 Tempest Mk. V – Early and late cannon barrels
- Q32 242 Tempest - Main wheels late type
- Q32 245 Tempest/Typhoon - Pilot's seat with harness
- Q32 246 Tempest/Typhoon - Pilot's seat
- Q32 247 Gyro gunsight Mk.II - for Tempest and other fighters
- Q32 248 Gunsight Type I Mk.III - for Tempest Mk.V
- 5108 Tempest - Main undercarriage strengthened legs
- F32 317 British Tempest pilot, climbing out of cockpit

Special Hobby, Mezileší 718, CZ - Praha 9, 193 00,
e-mail: office@specialhobby.eu

www.specialhobby.eu

PUR1



PUR2

**Tire black
barva pneu**

**Aluminium
Hliník**

