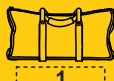
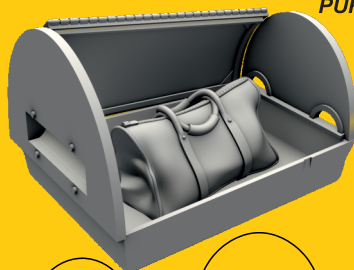


5137
1/32

**DH.82 Tiger Moth
Luggage Box**
for ICM kit



PUR - Polyurethane parts



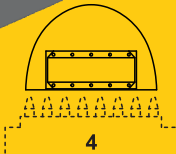
1



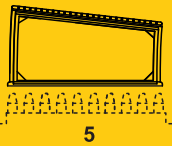
2



3



4



5

© Special Hobby 2021

Díly ohnuté popř. pokroucené vlivem teplotních změn a stárnutí materiálu, mohou být narovnány do požadovaného tvaru pomocí proudu teplé vody nebo vzduchu (fén na vlasy). K lepení použít kvanoakrylátové lepidlo! Kontaktní plochy doporučujeme před lepením odmastit. Různé drátky a tyčinky nejsou přiloženy.

Parts slightly distorted and bent owing to temperature changes or due to material aging can be straightened to requested shape by hot water or hot air jet (hair dryer). This process can be repeated till result is entirely satisfactory. For best result use cyanoacrylate glue! Ungreasing contact areas is recommended before gluing. Wires and rods not included.

Visit our official website and e-shop at
www.cmkkits.com
www.specialhobby.eu
www.facebook.com/specialhobby/



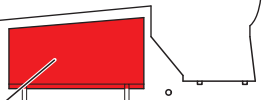
CMK H1010

The Razor Saw with Handle (cat. n. H1010)
is a great tool for cutting both plastic and resin.
CMK also offers a wide variety
of coarse / medium / fine saws.

Special Hobby, Mezileší 718, Praha 9, 193 00, Czech Republic
e-mail: office@specialhobby.eu

Kit part A16

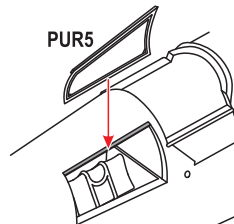
Odstranit / Remove



Fuselage

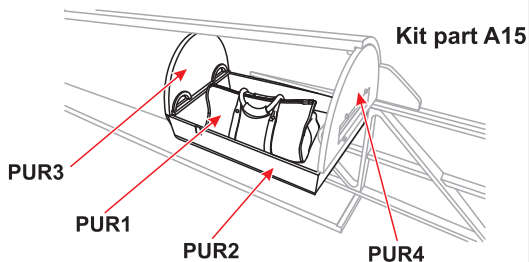
PUR5

PUR5



INFO VIEW

**! v kroku 03 vyměnit díl D22 za PUR4 !
in step 03 replace part D22 by PUR4 !**



Kit part A15

Other CMK sets for 1/32 DH.82 Tiger Moth (ICM kit):

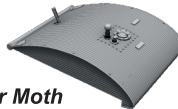
5139

DH.82 Tiger Moth
Mainwheels and Tailskid



5142

DH.82 Tiger Moth
Wing Tank Correction Set



5140

DH.82 Tiger Moth Instrument
Panels with Compasses
and Coaming, Correction Set



5138

DH.82 Tiger Moth
Correction Propeller

