

Blohm & Voss Bv 170



1:72
No. 115

One of Hitler's projects of fast bombers (Schnell-Bomber) was also B&V P. 170. The unorthodox design was projected by dr. R. Vogt in 1942. The machine had to be driven by a triplet of BMW 801D engines. The location of the two-men crew cabin as far as on the end of the fuselage hatto enable the pilots and navigator's back view. The aircraft had to carry, with regard to its high performances, no defence armaments it hat to carry up to 2000 kg of bombs, which it had to drop in horizontal flight.

Tech. data:

Length: 14,3 m; span: 16,0 m.

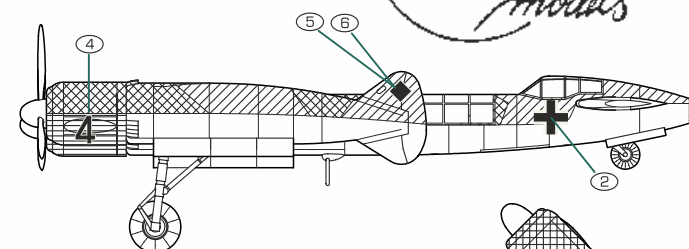
Maximum speed: 820 km/h in 8000 m altitude; range: 2000 km/h

Jedním z projektů Hitlerových rychlých bombardérů (Schnell-Bomber) byl i B&V P.170. Neortodoxní konstrukci navrhl dr. R. Vogt v roce 1942. Stroj měl být poháněn trojicí motorů BMW 801D. Umístění kabiny dvoučlenné osádky až na konci trupu mělo umožnit dokonalý výhled pilota i navigátora vzad. Letoun neměl mít, vzhledem k vysokým výkonům obrannou výzbroj. Měl nést až 2000 kg pum, které by odhazoval v horizontálním letu.

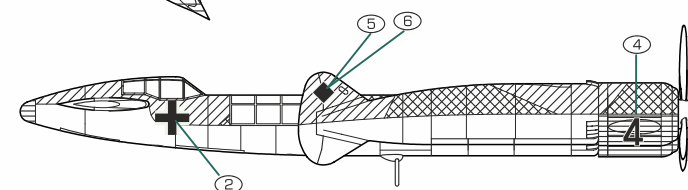
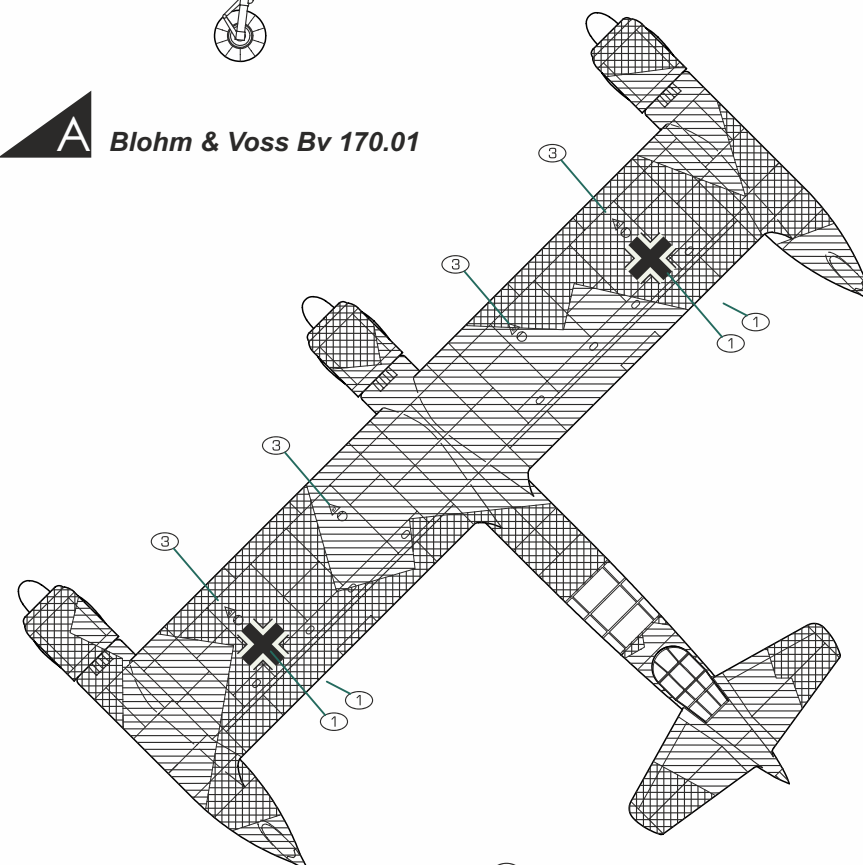
Tech. data:

Délka: 14,3 m; rozpětí: 16,0 m.

Max. rychlost: 820 km/h ve výšce 8000 m; dolet: 2000 km



A Blohm & Voss Bv 170.01



Hnědofialová
Brown Violet
Braunviolett RLM 81



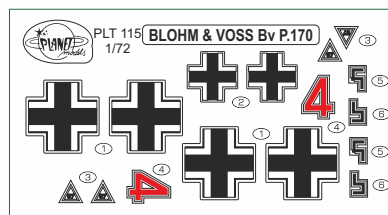
Světlá modrá
Light blue
Lichtblau RLM 76



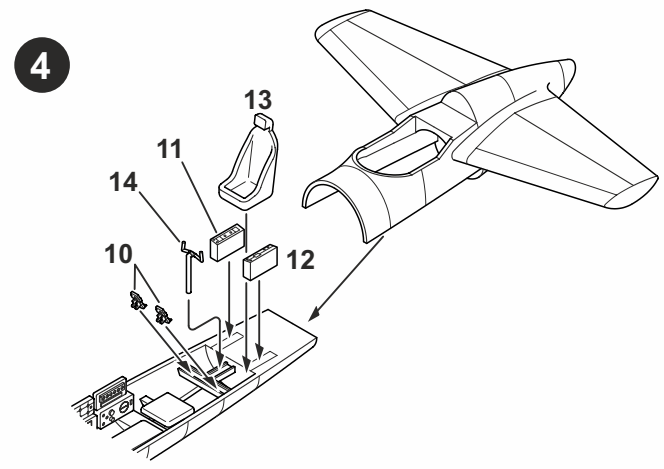
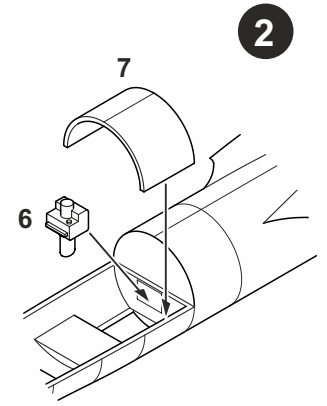
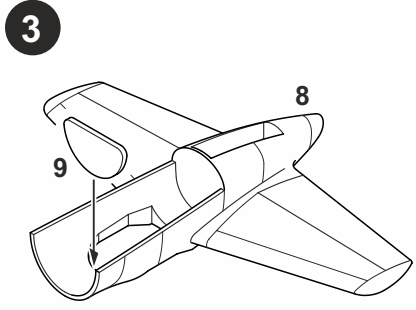
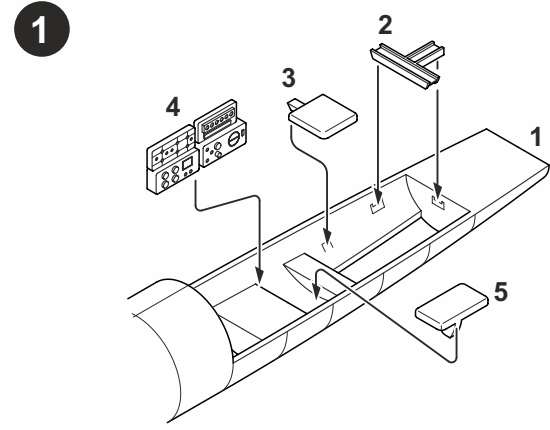
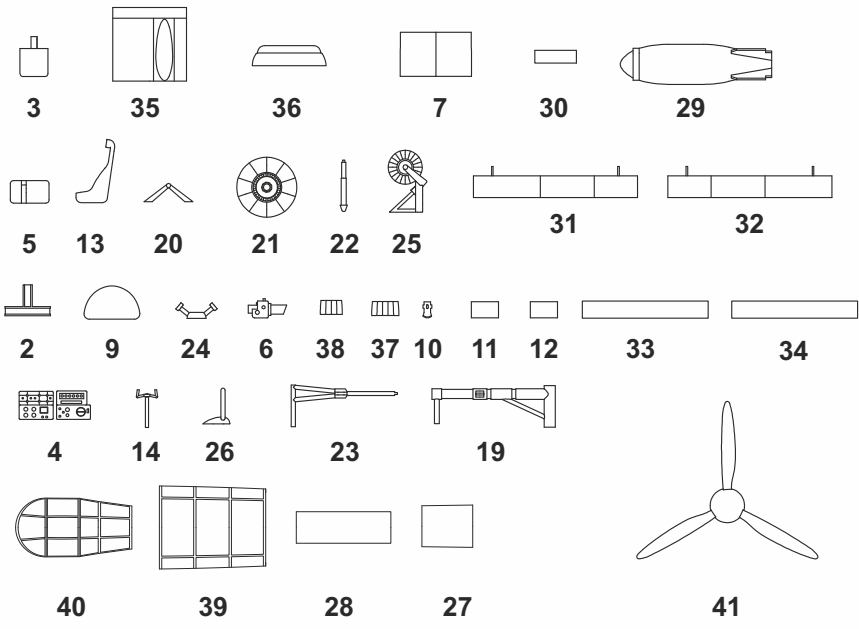
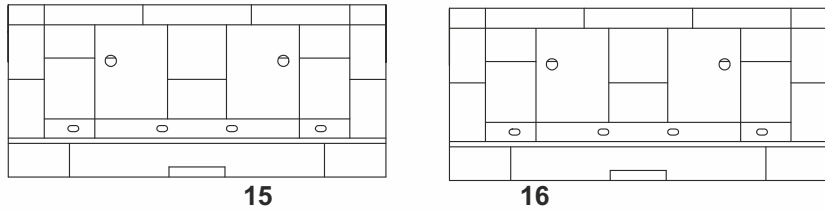
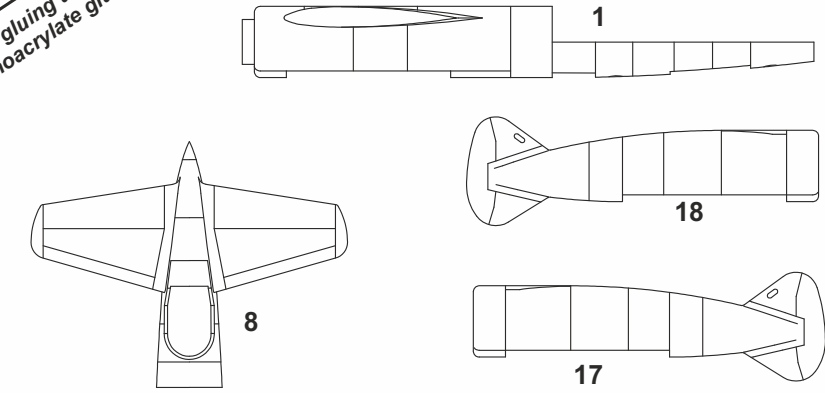
Zelená
Green
Lichtgrün RLM 82



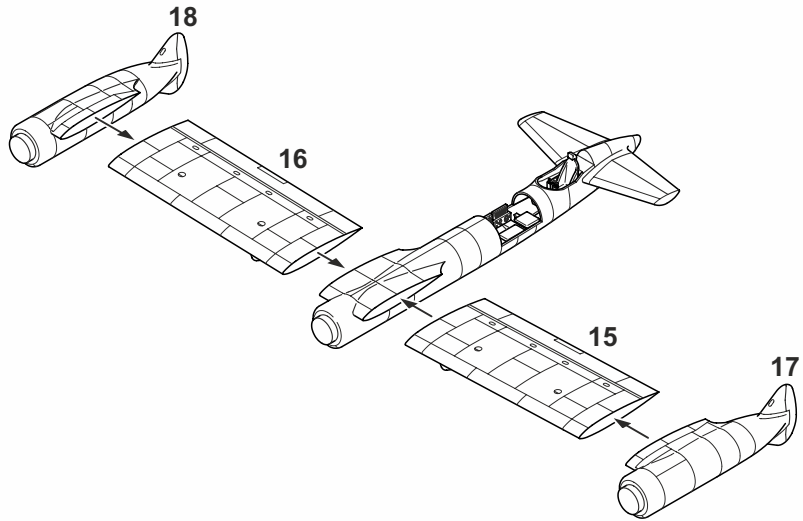
Žlutá
Yellow
Gelb RLM 04



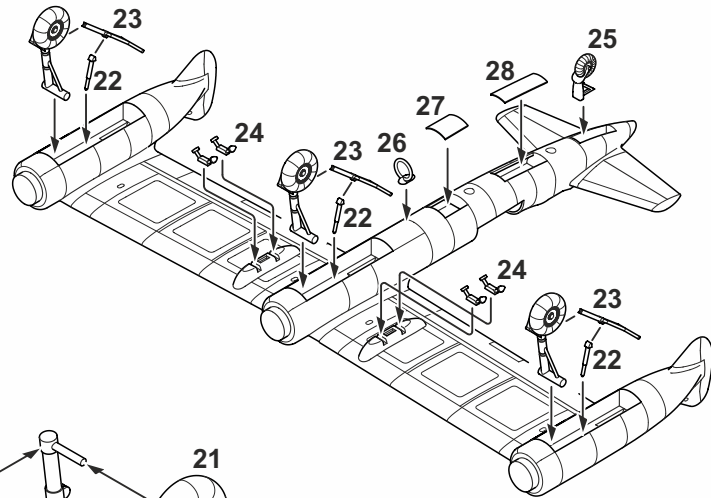
**Použit
kyanoakrylátové lepidlo
For gluing use
cyanoacrylate glue**



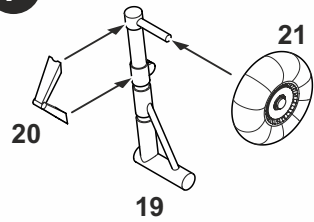
5



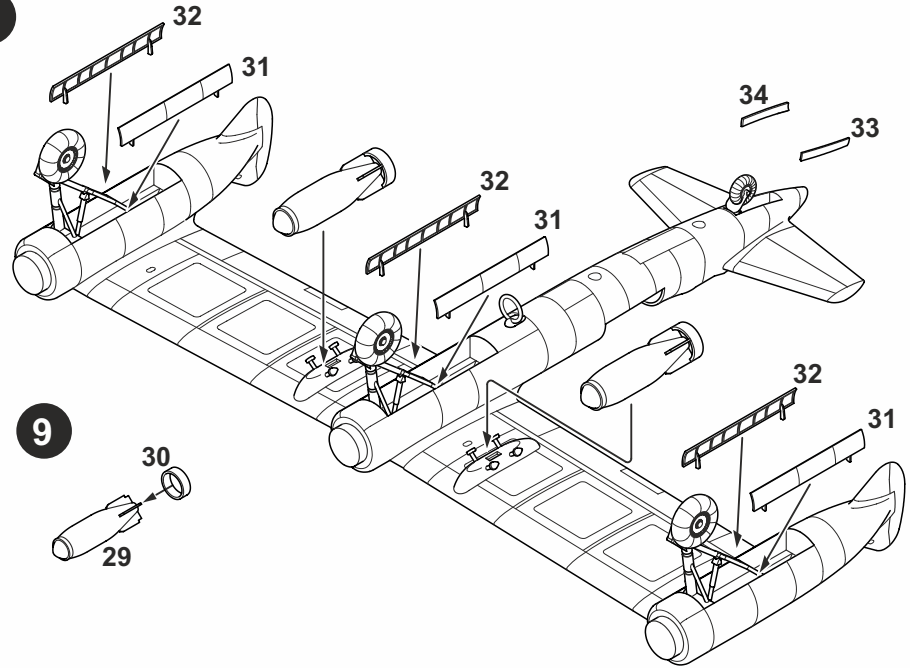
6



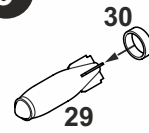
7



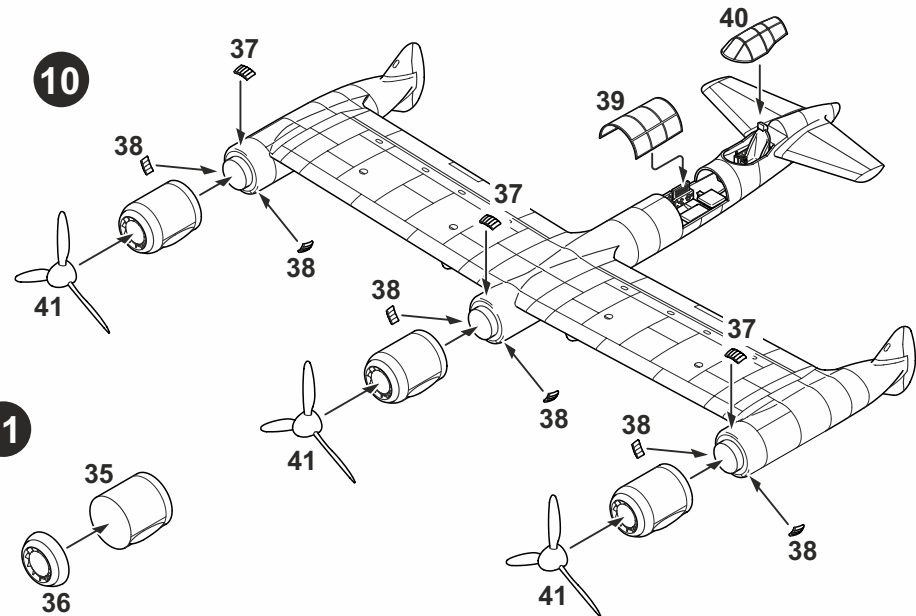
8



9



10



11

