




NF

# NATURAL FEELING

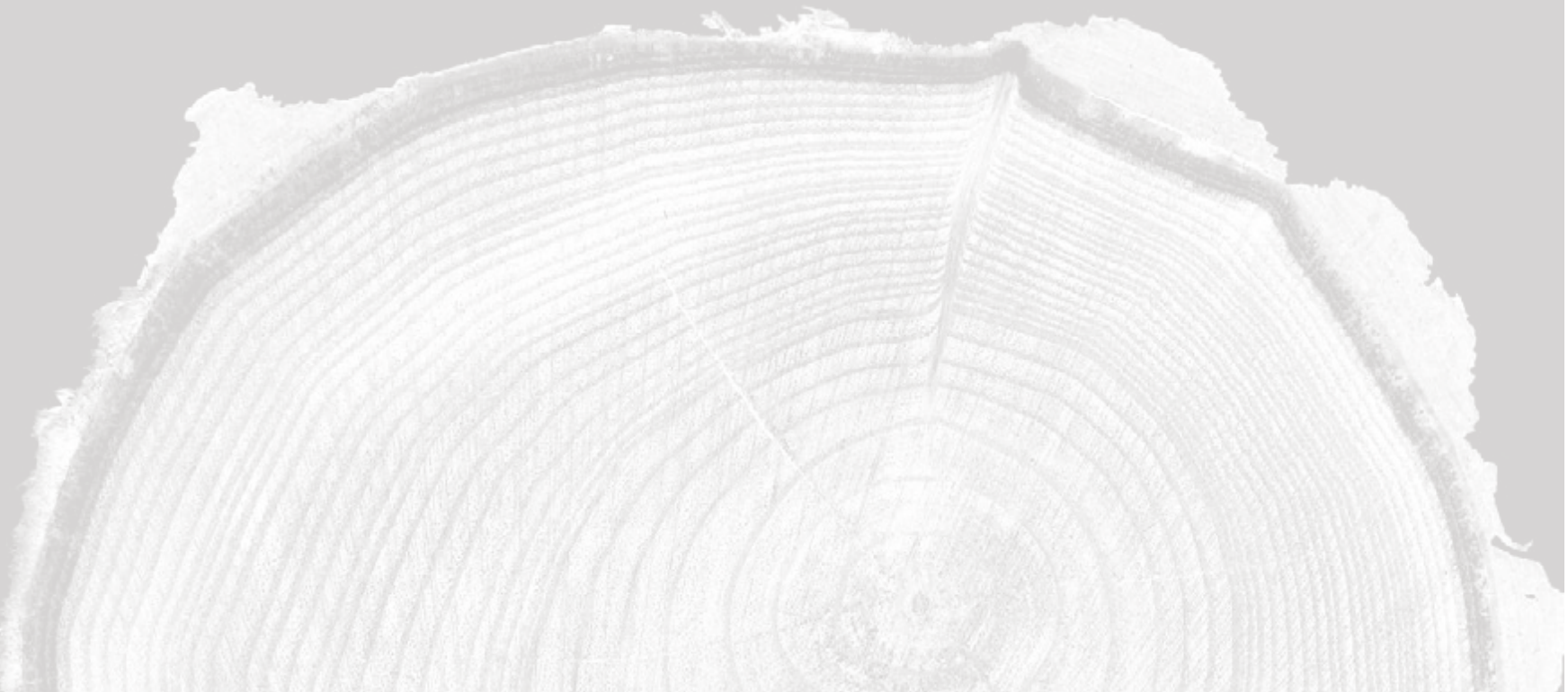
- wood meets design -

  
**NovaBell**<sup>®</sup>  
Ceramiche Gruppo Bellei



# NATURAL FEELING

- wood meets design -



**Natural Feeling è il nuovo progetto effetto legno dedicato a chi cerca l'eleganza delle superfici lignee più essenziali e moderne. NovaBell ha progettato una collezione che avvolge lo spazio con rigore ed estrema naturalità generando il perfetto equilibrio tra design, gusto e praticità.**



**Natural Feeling** is the new **wood-effect project** dedicated to those that **prioritise the elegance of the most minimalist and modern wood surfaces**. NovaBell has designed a collection that envelopes spaces with rigour and extreme naturalness, generating a **perfect balance between design, taste and practicality**.

**Natural Feeling** est le nouveau projet **effet bois** dédié à ceux qui recherchent l'**élégance des surfaces en bois les plus essentielles et les plus modernes**. NovaBell a souhaité une collection qui enveloppe l'espace de rigueur et d'un naturel immodéré, dans un **parfait équilibre entre design, style et praticité**.

**Natural Feeling** ist das neue Konzept in **Holzoptik**, das an die elegante **Ausstrahlung puristischer, moderner Holzflächen anknüpft**. Die Kollektion von NovaBell ermöglicht die Gestaltung natürlich-strenger Raumwelten, in denen eine **ausgewogene Balance aus Design, Stil und Funktionalität** den Ton an gibt.

**Natural Feeling** es el nuevo proyecto de **efecto madera** dedicado a quien busca la **elegancia de las superficies lignarias más esenciales y modernas**. NovaBell ha proyectado una colección que envuelve el espacio con rigor y extraordinaria naturalidad generando un **perfecto equilibrio entre diseño, gusto y practicidad**.

**Natural Feeling** - это новый проект **под дерево**, созданный для тех, кто ищет **элегантность самых лаконичных и современных деревянных поверхностей**. NovaBell разработала коллекцию, строго и естественно оформляющую пространство, создавая **отличное равновесие дизайна, вкуса и практичности**.

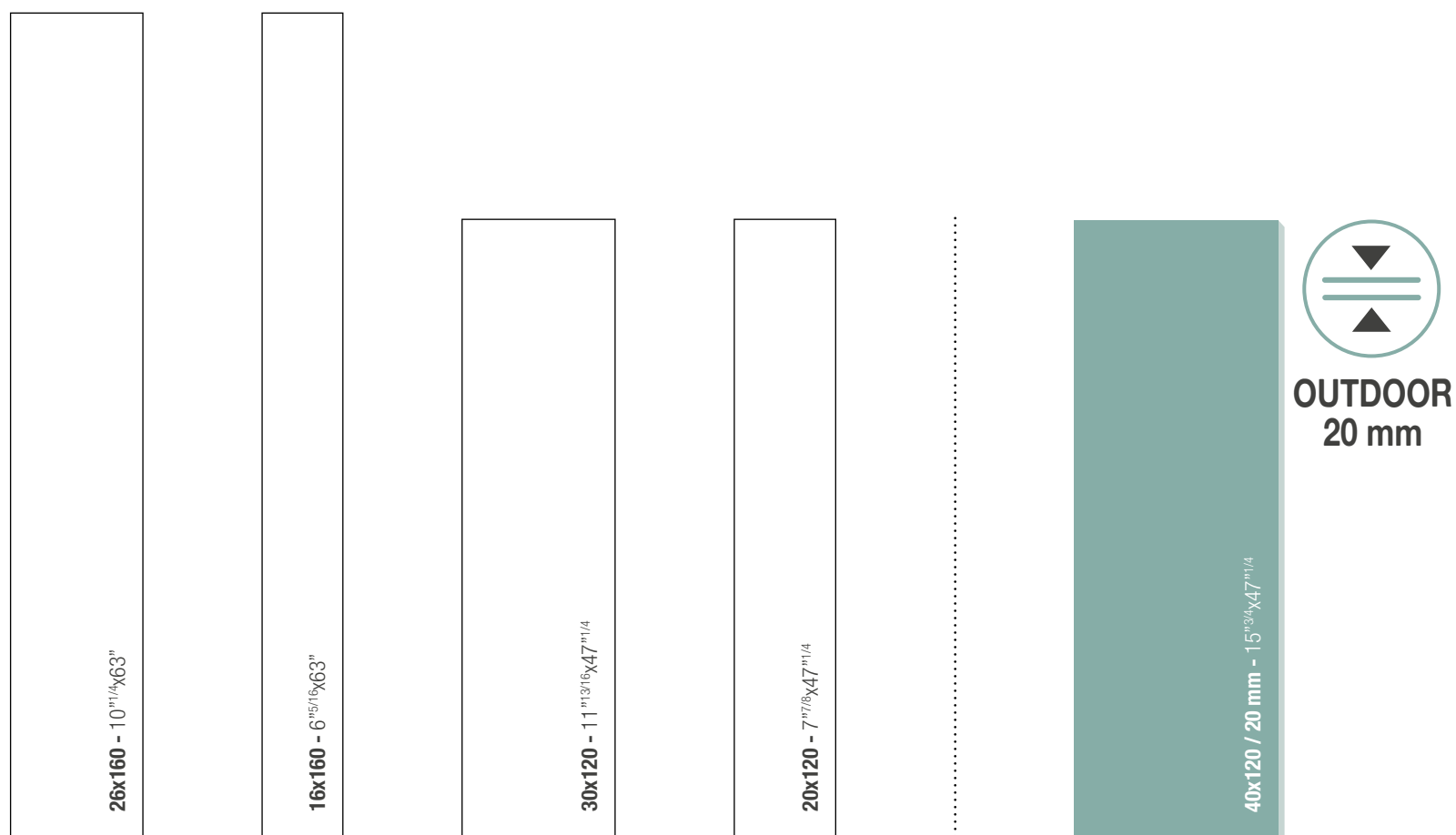
# Plance scenografiche di grande dimensione e moduli per esterno ingelivi e antiscivolo:

NovaBell mette a disposizione tutti gli strumenti per i professionisti dell'interior design.

Dalle pose più tradizionali agli schemi geometrici più attuali, i moduli **Natural Feeling** assicurano **eccellenza estetica**.

4+1

SIZES



Large, eye-catching strips and frostproof and anti-slip outdoor modules. NovaBell provides interior design professionals with all the instruments they may need. From the most traditional laying patterns to the latest geometric effects, **the Natural Feeling modules are a guarantee of aesthetic excellence.**

De grands listels aux dimensions spectaculaires et des modules pour extérieur résistants au gel et antidérapants : NovaBell met tous les instruments à la disposition des professionnels de la décoration d'intérieurs. Que les calepinages soient traditionnels ou géométriques, comme le veut la tendance actuelle, **les modules Natural Feeling sont le gage d'une esthétique irréprochable.**

Großzügiges, ausdrucksstarkes Dielenformat und frostsichere, rutschhemmende Outdoor-Module: NovaBell bietet alles Notwendige für Innenarchitekten. Egal ob klassische oder trendige geometrische Verlegemuster: **die Module von Natural Feeling sorgen für eine wertige Optik.**

Listones espectaculares de grandes dimensiones y módulos para exterior resistentes a las heladas y antideslizantes: NovaBell pone a disposición todas las herramientas para los profesionales del interiorismo. De colocaciones más tradicionales a los esquemas geométricos más actuales, **los módulos Natural Feeling aseguran excelencia estética.**

Эффектные крупноразмерные панели и морозостойкие, нескользкие модули для наружной укладки: NovaBell предоставляет в распоряжение профессионалов интерьерного дизайна все необходимые им инструменты. Предлагая традиционные виды укладки наряду с самыми актуальными геометрическими схемами, **модули Natural Feeling являются залогом эстетического совершенства.**

6

NUANCES

Le 6 rassicuranti tonalità riflettono un'anima sobria e trendy, mettono in luce gli effetti tono su tono di nodi e venature e tutta la perfezione estetica delle raffinate irregolarità di superficie.

The 6 reassuring tones are the reflection of an understated and fashionable spirit, highlighting the tone-on-tone effects of knots and vein patterns and all of the aesthetic perfection of the refined surface irregularities.

Ses 6 nuances rassurantes révèlent une âme sobre et tendance, mettant en lumière les effets ton sur ton des nœuds et des veines et toute la perfection esthétique des précieuses irrégularités de la surface.

Die 6 ruhigen Farben gehen mit einem schlichten, trendigen Stil einher. Sie betonen die Ton-in-Ton-Effekte von Ästen und Maserungen und die vollendete Ästhetik feiner Oberflächenmakel.

Las seis acogedoras tonalidades reflejan un alma sobria y a la moda, ponen de relieve los efectos tono sobre tono de nudos y vetas y toda la perfección estética de las refinadas irregularidades de la superficie.

6 успокаивающих оттенков отражают сдержанный и актуальный характер, подчеркивают эффект "тон в тон" сучков и рисунка дерева, а также эстетическое совершенство изысканных неравномерностей на поверхности.

# NATURAL FEELING CELEBRA I NUOVI LINGUAGGI DELL'ABITARE.

Attraverso la contaminazione creativa tra superfici, Natural Feeling celebra il tema “natura + design”. NovaBell richiama spazi confortevoli che rispondono alle nuove tendenze dell'abitare contemporaneo.

NATURAL FEELING



STONE/MARBLE/CONCRETE EFFECT

#### NATURAL FEELING CELEBRATES THE NEW LANGUAGES OF LIVING.

Through the creative combination of surfaces, Natural Feeling celebrates the theme of “nature + design”. NovaBell creates comfortable spaces that respond to the new trends of contemporary living.

#### NATURAL FEELING CÉLÈBRE LES NOUVEAUX LANGAGES DE NOS ESPACES DE VIE.

Par l'alliage créatif des surfaces, Natural Feeling célèbre le thème « nature + design ». NovaBell raconte l'histoire d'espaces confortables où s'expriment les nouvelles tendances des intérieurs contemporains.

#### NATURAL FEELING ZELEBRIERT DIE NEUEN TRENDS DER WOHNKULTUR.

Natural Feeling setzt das Thema „Natur + Design“ mit der kreativen Kombination von Oberflächen um.

NovaBell orientiert sich an behaglichen Raumatmosphären, die zeitgemäßen Wohntrends entsprechen.

#### NATURAL FEELING RINDE HOMENAJE A LOS NUEVOS LENGUAJES DE LA VIVIENDA.

Por medio de la mezcla creativa de superficies, Natural Feeling rinde homenaje al tema “natura + diseño”. NovaBell propone espacios confortables que responden a las nuevas tendencias de la vivienda contemporánea.

#### NATURAL FEELING ОТДАЕТ ДАТЬ НОВОМУ ЯЗЫКУ В ОФОРМЛЕНИИ ЖИЛЬЯ.

Опираясь на креативное смешивание разных поверхностей, Natural Feeling отдает дань теме “природа + дизайн”. NovaBell создает уютные пространства, соразмерные новым тенденциям оформления современного жилья.

## Continuity effect.

Per soddisfare la **continuità visiva fra interno ed esterno** NovaBell mette a disposizione le **superfici antiscivolo** che garantiscono tutti i vantaggi tecnici di **ingelività e sicurezza**.

IN\OUT



To ensure the **visual continuity between the interior and exterior**, NovaBell provides **anti-slip surfaces** which guarantee all of the technical benefits of their **frostproof qualities and safety**.

Pour satisfaire la **continuité visuelle entre intérieur et extérieur**, NovaBell met à disposition les **surfaces antidérapantes** qui garantissent tous les avantages techniques de **résistance au gel et de sécurité**.

Für die **optisch einheitliche Gestaltung von Innen- und Außenbereich** bietet NovaBell **rutschhemmende Oberflächen**, die für **Frost- und Rutsicherheit** bürgen.

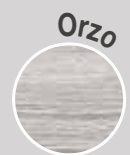
Para satisfacer la **continuidad visual entre interior y exterior** NovaBell pone a disposición las **superficies antideslizantes** que garantizan todas las ventajas técnicas de **resistencia a las heladas y seguridad**.

Для обеспечения **визуальной согласованности внутренних и наружных пространств** NovaBell предлагает **несколько поверхностей**, предоставляющие все технические преимущества **морозостойкости и безопасности**.

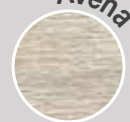
# NATURAL STRENGTH.



40x120 cm - 15<sup>3/4</sup> x 47<sup>1/4</sup>



Orzo



Avena



Canapa



Lino

La tecnologia **20 mm** da esterno è carrabile e insensibile agli agenti atmosferici.

The **20 mm** outdoor technology is drive-over and immune to the weather.

La technologie **20 mm** pour l'extérieur est carrossable et insensible aux agents atmosphériques.

Die Outdoor-Fliesen in der Stärke **20 mm** sind befahrbar und witterungsbeständig.

La tecnología de **20 mm** para exterior es transitable e insensible a los agentes atmosféricos.

Материалы для наружных полов, основанные на технологии **20 мм**, выдерживают движение транс-портных средств, а также атмосферное воздействие.

CANAPA

OUT



FROSTPROOF



ANTISLIP



DRIVE-OVER



## Elegant match.

L'effetto pietra Sovereign si combina con i toni caldi delle lastre Avena, proiettando sulle superfici inconfondibile purezza di stile ed equilibrio cromatico.



**FLOOR:** Avena Rettificato 26x160 - 10<sup>n°1/4</sup>x63<sup>n°</sup> / Avena Rettificato 16x160 - 6<sup>n°5/16</sup>x63<sup>n°</sup>  
**WALL:** SOVEREIGN Avorio Rettificato 40x80 - 15<sup>n°3/4</sup>x31<sup>n°1/2</sup>

40x80 cm 15<sup>3/4</sup>x31<sup>1/2</sup>"

SOVEREIGN



NATURAL FEELING  
AVENA

Multi-size

26x160 cm - 10<sup>1/4</sup>x63"

16x160 cm - 6<sup>5/16</sup>x63"



The Sovereign stone effect combines with the warm hues of the Avena slabs to project an unmistakably pure style and colour balance onto the surfaces.

L'effet pierre Sovereign s'allie aux tons chauds des dalles Avena, en dotant les surfaces d'une incomparable pureté de style et d'équilibre chromatique.

Die Natursteinoptik von Sovereign vereint sich mit den warmen Nuancen der Platten Avena zu Flächenbildern, die einen puristischen Stil und farbliche Harmonie ausstrahlen.

El efecto piedra Sovereign se combina con los tonos cálidos de las placas Avena, proyectando sobre las superficies una pureza de estilo y un equilibrio cromático inconfundibles.

Элегантный камень Sovereign сочетается с теплыми тонами плит Авена, образуя на поверхности несравненную чистоту стиля и цветовое равновесие.



Natural Feeling è composto al 40% da materie riciclate. NovaBell rispetta l'ambiente e realizza prodotti sicuri, ecologici e all'avanguardia.

40% of Natural Feeling is made up of recycled materials. NovaBell respects the environment and develops safe, environmentally-friendly and cutting-edge products.

Natural Feeling contient 40 % de matériaux recyclés. NovaBell respecte l'environnement et réalise des produits sûrs, écologiques et à la pointe de la technologie.

Natural Feeling besteht zu 40% aus Recyclingmaterial. NovaBell trägt zur Erhaltung der Umwelt bei und stellt sichere, umweltfreundliche High-Tech-Produkte her.

Natural Feeling está compuesto en un 40% por materiales reciclados. NovaBell respeta el medio ambiente y fabrica productos seguros, ecológicos y de vanguardia.

Natural Feeling состоит на 40% из повторно переработанных материалов. NovaBell уважает окружающую среду и выпускает безопасную, экологичную и передовую продукцию.

## Comfortable Hotel Design.

Natural Feeling assicura un costante equilibrio tra modernità e armonia, seguendo i più innovativi standard degli spazi dedicati all'accoglienza.

**FLOOR:** Lino Rettificato 26x160 - 10<sup>11/4</sup>x63<sup>11/2</sup> / SOVEREIGN Grigio Chiaro Rettificato 80x80 - 31<sup>11/2</sup>x31<sup>11/2</sup>  
**WALL:** Mattoncino Lino 30x60 - 11<sup>11/16</sup>x23<sup>5/8</sup> / SOVEREIGN Grigio Chiaro Rettificato 40x80 - 15<sup>3/4</sup>x31<sup>11/2</sup>

26x160 cm - 10<sup>1</sup>/<sub>4</sub>"x63"

LINO  
NATURAL FEELING



SOVEREIGN

40x80 cm 15<sup>3</sup>/<sub>4</sub>"x31<sup>1</sup>/<sub>2</sub>"

80x80 cm 31<sup>1</sup>/<sub>2</sub>"x31<sup>1</sup>/<sub>2</sub>"



Natural Feeling guarantees a constant balance between modernity and harmony, aligning with the most innovative standards in public spaces.

Natural Feeling est un gage d'équilibre constant entre modernité et harmonie, car elle se conforme aux normes les plus innovantes des espaces d'accueil.

Natural Feeling gewährleistet eine ausgewogene Balance von Behaglichkeit und Moderne und wird den modernsten Standards des Gast- und Hotelgewerbes gerecht.

Natural Feeling asegura un constante equilibrio entre modernidad y armonía, siguiendo los más innovadores estándares de los espacios dedicados a la acogida.

Natural Feeling обеспечивает постоянное равновесие современности и гармонии, соблюдая самые современные стандарты, применимые к объектам гостиничной и ресторанной индустрии.



# WALLS OF ELEGANCE.

Attraverso la semplicità compositiva, i **moduli Mattoncino** esprimono **ricercatezza di stile e coerenza progettuale**; sono disponibili in tutti i colori e prevedono **una versione creativa multicolore**.



Thanks to their compositional simplicity, **Mattoncino modules are the epitome of stylish elegance and de-sign consistency**; they are available in all colours and come in a **creative multicolour version**.

Par une composition simple, les **modules Mattoncino expriment à la fois un style raffiné et une cohérence conceptuelle** ; ils existent dans toutes les couleurs et dans **une version créative multicolore**.

Mit ihrer kompositorischen Schlichtheit **bringen die Module Mattoncino erlesenen Stil und gestalterische Konsequenz zum Ausdruck**. Sie sind in allen Farben und auch in einer  **kreativen Multicolor-Version** erhältlich.

A través de la sencillez compositiva, **los módulos Mattoncino expresan sofisticación estilística y coherencia proyectiva**; se hallan disponibles en todos los colores y prevén **una versión creativa multicolor**.

Опираясь на композиционную простоту, **модули Mattoncino выражают изысканность стиля и про-ектную поступательность**. Они доступны для всех цветов и предусматривают **креативный, много-цветный вариант**.



FORMALDEHYDE-FREE  
ASBESTOS-FREE  
CHLORINE-FREE

Il gres porcellanato  
NovaBell non contiene  
elementi organici  
volatili, è anallergico  
e non invecchia.



NovaBell porcelain  
stoneware does not  
contain volatile organic  
compounds, is non-allergic  
and does not age.

Le grès cérame NovaBell  
ne contient pas de COV  
(composés organiques  
volatils), est anti-allergique  
et ne vieillit pas.

Das Feinsteinzeug von  
NovaBell enthält keine  
flüchtigen organischen  
Stoffe, ist allergenfrei  
und altert nicht.

El gres porcelánico  
NovaBell no contiene  
compuestos orgánicos  
volátiles, es no alergénico  
y no envejece.

Керамогранит NovaBell не  
содержит органических  
летучих веществ,  
является неаллергенным и  
нестареющим материалом.

## Warm energy.

Le intense tonalità dell'essenza Cocco sono completate dai pavimenti 80x160 cm della linea Walking Extra.

**WALL:** Cocco Rettificato 26x160 - 10<sup>11</sup>/<sub>16</sub>x63"

**FLOOR:** WALKING EXTRA Iron Rettificato 80x160 - 31<sup>11</sup>/<sub>16</sub>x63" - WALKING EXTRA Iron Rettificato 20mm 75x75 - 29<sup>11</sup>/<sub>16</sub>x29<sup>11</sup>/<sub>16</sub>"

The intense tones of the Cocco essence are completed by the 80x160 cm floors of the Walking line.

Les intenses tonalités de l'essence Cocco trouvent leur complément dans les revêtements de sol de 80x160 cm de la ligne Walking.

Die kräftigen Nuancen von Cocco kennzeichnen die Bodenfliesen 80x160 cm der Linie Walking.

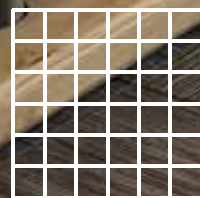
Las intensas tonalidades de la esencia Cocco se ven completadas por los pavimentos de 80 x 160 cm de la línea Walking.

Насыщенные цвета Cocco дополняются напольной плиткой 80x160 см коллекции Walking.





## Mosaico



30x30 cm  
11<sup>13/16</sup> x 11<sup>13/16</sup>

I MOSAICI COORDINATI ALLE PLANCE CERAMICHE, PERSONALIZZANO GLI SPAZI CHE ACCOLGONO ELEMENTI INTIMI E PREZIOSI.

The mosaics coordinated with the ceramic strips personalise the spaces that house intimate and precious possessions.  
Les mosaïques assorties aux listels céramiques, personnalisent les espaces qui accueillent des éléments intimes et précieux.  
Die zu den großen Längsformaten passenden Mosaik ermöglichen individuelle Raumgestaltungen mit persönlichen, wertigen Details.  
Los mosaicos coordinados con los listones cerámicos personalizan los espacios, que albergan elementos íntimos y preciosos.  
Мозаика, сочетающаяся с керамическими панелями, индивидуально оформляет интерьеры, где находятся уютные и ценные элементы.

26x160 cm - 10<sup>11/4</sup>x63<sup>11/16</sup>

COCCO  
NATURAL FEELING



WALKING EXTRA

80x160 cm 31<sup>11/2</sup>x63<sup>11/16</sup>

OUTDOOR  
75x75 cm  
29<sup>11/2</sup>x29<sup>11/16</sup>



20 mm

NON-ABSORBENT



Natural Feeling è concepito per rivestire sia pavimenti che pareti, è idrorepellente e antimacchia.

STAIN-RESISTANT



EASY TO CLEAN



Natural Feeling is designed to cover both floors and walls and its water- and stain-resistant.

Natural Feeling est conçue pour revêtir aussi bien les sols que les murs. Elle est hydrofuge et antitaches.

Natural Feeling ist für Bodenbeläge und Wandverkleidungen konzipiert und ist wasserabweisend und fleckbeständig.

Natural Feeling se ha concebido para revestir tanto pavimentos como paredes, es repelente al agua y resistente a las manchas.

Коллекция Natural Feeling была создана как для настила полов, так и для облицовки стен, является водоотталкивающей и не пачкается.

## Urban Style Mix.

Brillanti maioliche, ceramiche effetto cotto e l'accogliente personalità di Natural Feeling: la contaminazione tra superfici diventa un vero e proprio strumento d'arredo.

FLOOR: Soia Rettificato 16x160 - 6<sup>5/16</sup>x63"

WALL: MATERIA Brick Chiaro 6x25 - 2<sup>3/8</sup>x9<sup>13/16</sup> / Brick Angolo Esterno Chiaro 6x25 - 2<sup>3/8</sup>x9<sup>13/16</sup> / Ghiaccio 15x30 - 5<sup>7/8</sup>x11<sup>13/16</sup> / Decoro Vietri Mix 15x15 - 5<sup>7/8</sup>x5<sup>7/8</sup>



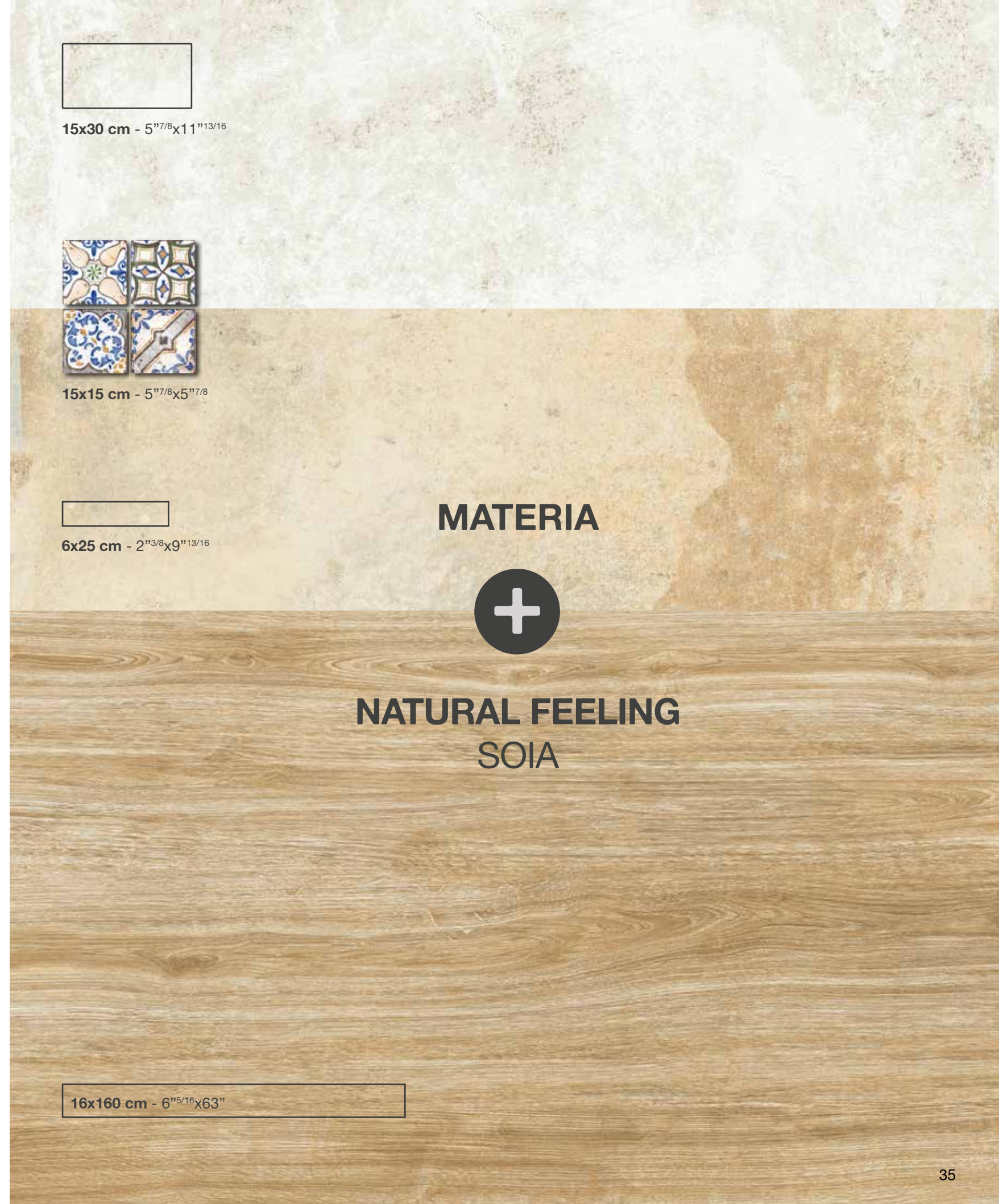
Brilliant majolica, terracotta-effect ceramics and the welcoming personality of Natural Feeling: **the fusion of surfaces becomes an authentic furniture solution.**

L'éclat des faïences, l'effet cotto des céramiques et la chaleureuse personnalité de Natural Feeling. **Quand les surfaces s'accordent pour devenir un véritable instrument de décoration.**

Leuchtende Majoliken, Keramik in Cotto-Optik und die behagliche Ausstrahlung von Natural Feeling: **die Kombination unterschiedlicher Flächenbilder wird zum Gestaltungsmittel.**

Brillantes mayólicas, cerámicas de efecto cotto y la acogedora personalidad de Natural Feeling: **la mezcla entre superficies se convierte en un auténtico instrumento decorativo.**

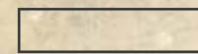
Глянцевая майолика, керамика под неглазурованную плитку и уютный характер Natural Feeling: **смешивание поверхности превращается в настоящий инструмент для создания обстановки.**



15x30 cm - 5<sup>7/8</sup>x11<sup>13/16</sup>



15x15 cm - 5<sup>7/8</sup>x5<sup>7/8</sup>



6x25 cm - 2<sup>3/8</sup>x9<sup>13/16</sup>

**MATERIA**

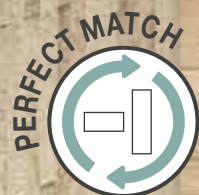


**NATURAL FEELING  
SOIA**

16x160 cm - 6<sup>5/16</sup>x63"



NovaBell completa le proprie collezioni con pezzi speciali per finiture a regola d'arte.



NovaBell completes its collections with special trims for picture perfect finishes.

NovaBell complète ses collections par des pièces spéciales pour réaliser des finitions dans les règles de l'art.

NovaBell rundet die Kollektionen mit Formteilen für fachgerechte Detailverarbeitungen ab.

NovaBell completa sus colecciones con piezas especiales para rematar los acabados de la mejor manera.

NovaBell предусматривает для своих коллекций специальные изделия, обеспечивающие безупречную отделку.

## Prestigious workspace.

Pose architettoniche tra formati e abbinamento con effetti marmorei risplendenti, trasformano i luoghi di lavoro in pura eleganza.

60x120 cm - 23<sup>5</sup>/<sub>8</sub>x47<sup>1</sup>/<sub>4</sub>"

IMPERIAL



NATURAL FEELING  
ORZO

16x160 cm - 6<sup>5</sup>/<sub>16</sub>x63"

26x160 cm - 10<sup>1</sup>/<sub>4</sub>x63"



The combination of different formats of **architectural laying patterns** and pairings with **resplendent marble effects** transform workplaces into realms of pure elegance.

**Les somptueux calepinages** entre formats et associations avec d'**étincelants aspects marbrés** transforment les lieux de travail en expression de l'**élégance la plus pure**.

**Verlegemuster** mit mehreren Formaten und **Kombinationen mit glänzenden Marmoroptiken** verwandeln den Arbeitsräume in elegante Interieurs.

**Colocaciones arquitectónicas** entre formatos y combinación con **efectos marmóreos resplandecientes** transforman los lugares de trabajo en pura elegancia.

**Дизайнерская укладка** разных форматов и сочетание с **полированными материалами под мрамор** превращают рабочие помещения в образцы чистой элегантности.



I moderni colori di Natural Feeling si associano allo splendore delle prestigiose lastre 60x120 Imperial: tutto rigorosamente in **gres porcellanato NovaBell**.

The modern colours of Natural Feeling are combined with the splendour of the prestigious 60x120 Imperial slabs: everything strictly in **NovaBell porcelain stoneware**.

Les couleurs modernes de Natural Feeling s'allient à la splendeur des prestigieuses dalles de 60x120 Imperial. Rigoureusement en **grès cérame NovaBell**.

Die modernen Farben von Natural Feeling vereinen sich mit der majestätischen Ausstrahlung der Platten Imperial 60x120: Total-Look in **Feinsteinzeug von NovaBell**.

Los modernos colores de Natural Feeling se asocian al esplendor de las prestigiosas placas de 60 x 120 Imperial; todo rigorosamente en **gres porcelánico NovaBell**.

Современные цвета коллекции Natural Feeling сочетаются с красотой престижных плит 60x120 Imperial: все они обязательно выполнены из **керамогранита Novabell**.





**ORZO**

**AVENA**

**CANAPA**

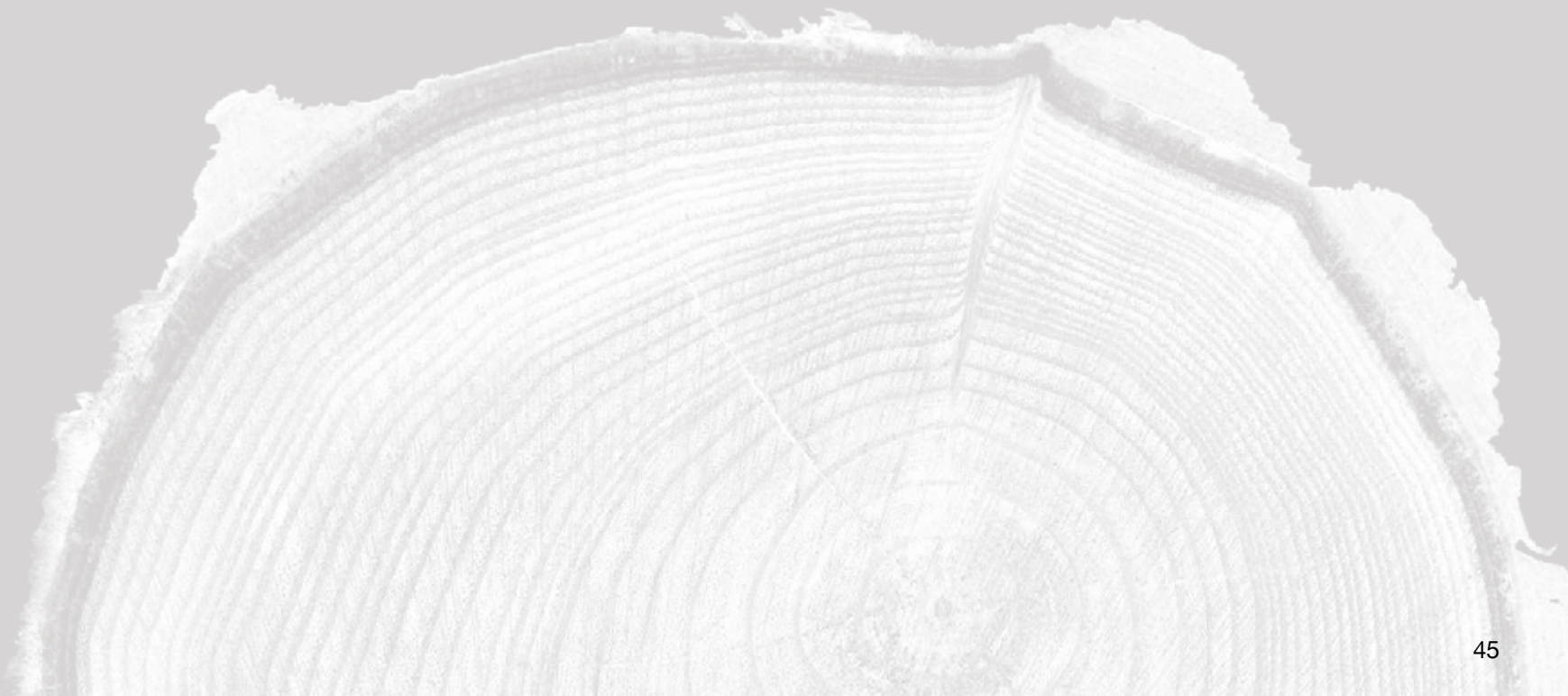
**SOIA**

**LINO**

**COCCO**

# ITEMS

**NATURAL FEELING**





cm. 26x160  
inch 10<sup>1</sup>/<sub>4</sub>x63<sup>3</sup>/<sub>8</sub>"

cm. 16x160  
inch 6<sup>1</sup>/<sub>8</sub>x63<sup>3</sup>/<sub>8</sub>"

cm. 30x120  
inch 11<sup>1</sup>/<sub>8</sub>x47<sup>1</sup>/<sub>4</sub>"

cm. 20x120  
inch 7<sup>7</sup>/<sub>8</sub>x47<sup>1</sup>/<sub>4</sub>"

cm. 40x120  
inch 15<sup>3</sup>/<sub>4</sub>x47<sup>1</sup>/<sub>4</sub>"



TECHNICAL DATA Rettificato. Rectified. Rectifié. Geschliffen. Rectificado. Калиброванный



# Orzo



CATALOGUE 20mm TECHNICAL DATA

↓ 20 mm

03 1110 ANTIKLEP 20 mm DCOF Wet ≥ 0.42 DIN 51097 A+B+C DIN 51130 R11 BCR Dry > 0.40 Wet > 0.40

26x160 - 10<sup>1</sup>/<sub>4</sub>x63<sup>3</sup>/<sub>8</sub>" NFL 16RT Orzo Rettificato

03 1110

16x160 - 6<sup>1</sup>/<sub>8</sub>x63<sup>3</sup>/<sub>8</sub>" NFL 14RT Orzo Rettificato

04 1110

30x120 - 11<sup>1</sup>/<sub>8</sub>x47<sup>1</sup>/<sub>4</sub>" NFL 13RT Orzo Rettificato

03 1095

20x120 - 7<sup>7</sup>/<sub>8</sub>x47<sup>1</sup>/<sub>4</sub>" NFL 11RT Orzo Rettificato

04 1095

40x120 - 15<sup>3</sup>/<sub>4</sub>x47<sup>1</sup>/<sub>4</sub>" NFL 12RT Orzo Rett. 20mm

01 1150



30x30 - 11<sup>1</sup>/<sub>8</sub>x11<sup>1</sup>/<sub>8</sub>" NFL 115K Mosaico 5x5 Orzo

10 3115



30x60 - 11<sup>1</sup>/<sub>8</sub>x23<sup>5</sup>/<sub>8</sub>" NFL 116K Mattoncino Orzo

04 3130

# Avena



CATALOGUE 20mm TECHNICAL DATA

↓ 20 mm

03 1110 ANTIKLEP 20 mm DCOF Wet ≥ 0.42 DIN 51097 A+B+C DIN 51130 R11 BCR Dry > 0.40 Wet > 0.40

26x160 - 10<sup>1</sup>/<sub>4</sub>x63<sup>3</sup>/<sub>8</sub>" NFL 06RT Avena Rettificato

03 1110

16x160 - 6<sup>1</sup>/<sub>8</sub>x63<sup>3</sup>/<sub>8</sub>" NFL 04RT Avena Rettificato

04 1110

30x120 - 11<sup>1</sup>/<sub>8</sub>x47<sup>1</sup>/<sub>4</sub>" NFL 03RT Avena Rettificato

03 1095

20x120 - 7<sup>7</sup>/<sub>8</sub>x47<sup>1</sup>/<sub>4</sub>" NFL 01RT Avena Rettificato

04 1095

40x120 - 15<sup>3</sup>/<sub>4</sub>x47<sup>1</sup>/<sub>4</sub>" NFL 02RT Avena Rett. 20mm

01 1150



30x30 - 11<sup>1</sup>/<sub>8</sub>x11<sup>1</sup>/<sub>8</sub>" NFL 005K Mosaico 5x5 Avena

10 3115



30x60 - 11<sup>1</sup>/<sub>8</sub>x23<sup>5</sup>/<sub>8</sub>" NFL 006K Mattoncino Avena

04 3130



30x40 - 11<sup>1</sup>/<sub>8</sub>x15<sup>3</sup>/<sub>4</sub>" NFL 400K Mattoncino Multicolor

04 3140

## PEZZI SPECIALI / Trims / Formteile / Pièces spéciales / Piezas especiales / Специальные изделия



7x120 - 2<sup>3</sup>/<sub>4</sub>x47<sup>1</sup>/<sub>4</sub>" NFL B12K Battiscopa Orzo

04 290

## PEZZI SPECIALI / Trims / Formteile / Pièces spéciales / Piezas especiales / Специальные изделия



7x120 - 2<sup>3</sup>/<sub>4</sub>x47<sup>1</sup>/<sub>4</sub>" NFL B02K Battiscopa Avena

04 290



10,5 mm **cm. 26x160**  
inch 10<sup>1</sup>/<sub>4</sub>x63"

10,5 mm **cm. 16x160**  
inch 6<sup>5</sup>/<sub>16</sub>x63"

10,5 mm **cm. 30x120**  
inch 11<sup>13</sup>/<sub>16</sub>x47<sup>1</sup>/<sub>4</sub>"

10,5 mm **cm. 20x120**  
inch 7<sup>7</sup>/<sub>8</sub>x47<sup>1</sup>/<sub>4</sub>"

20 mm **cm. 40x120**  
inch 15<sup>3</sup>/<sub>4</sub>x47<sup>1</sup>/<sub>4</sub>"



TECHNICAL DATA Rettificato. Rectified. Rectifié. Geschliffen. Rectificado. Калиброванный



# Soia



26x160 - 10<sup>1</sup>/<sub>4</sub>x63" **03**  
NFL 26RT Soia Rettificato **1110**

16x160 - 6<sup>5</sup>/<sub>16</sub>x63" **04**  
NFL 24RT Soia Rettificato **1110**

30x120 - 11<sup>13</sup>/<sub>16</sub>x47<sup>1</sup>/<sub>4</sub>" **03**  
NFL 23RT Soia Rettificato **1095**

20x120 - 7<sup>7</sup>/<sub>8</sub>x47<sup>1</sup>/<sub>4</sub>" **04**  
NFL 21RT Soia Rettificato **1095**

# Canapa



CATALOGUE 20mm TECHNICAL DATA

↓ 20 mm

**M F**  
**2 0**

ANTYSLIP

20 mm

DCOF  
Wet ≥ 0.42

DIN 51097  
A+B+C

DIN 51130  
R11

BCR  
Dry > 0.40  
Wet > 0.40

40x120 - 15<sup>3</sup>/<sub>4</sub>x47<sup>1</sup>/<sub>4</sub>" **01**  
NFL 32RT Canapa Rett. 20mm **1150**

26x160 - 10<sup>1</sup>/<sub>4</sub>x63" **03**  
NFL 36RT Canapa Rettificato **1110**

16x160 - 6<sup>5</sup>/<sub>16</sub>x63" **04**  
NFL 34RT Canapa Rettificato **1110**

30x120 - 11<sup>13</sup>/<sub>16</sub>x47<sup>1</sup>/<sub>4</sub>" **03**  
NFL 33RT Canapa Rett. **1095**

20x120 - 7<sup>7</sup>/<sub>8</sub>x47<sup>1</sup>/<sub>4</sub>" **04**  
NFL 31RT Canapa Rett. **1095**



30x30 - 11<sup>13</sup>/<sub>16</sub>x11<sup>13</sup>/<sub>16</sub>" **10**  
NFL 225K Mosaico 5x5 Soia **3115**



30x60 - 11<sup>13</sup>/<sub>16</sub>x23<sup>5</sup>/<sub>8</sub>" **04**  
NFL 226K Mattoncino Soia **3130**



30x30 - 11<sup>13</sup>/<sub>16</sub>x11<sup>13</sup>/<sub>16</sub>" **10**  
NFL 335K Mosaico 5x5 Canapa **3115**



30x60 - 11<sup>13</sup>/<sub>16</sub>x23<sup>5</sup>/<sub>8</sub>" **04**  
NFL 336K Mattoncino Canapa **3130**



30x40 - 11<sup>13</sup>/<sub>16</sub>x15<sup>3</sup>/<sub>4</sub>" **04**  
NFL 400K Mattoncino Multicolor **3140**

## PEZZI SPECIALI / Trims / Formteile / Pièces spéciales / Piezas especiales / Специальные изделия



7x120 - 2<sup>3</sup>/<sub>4</sub>x47<sup>1</sup>/<sub>4</sub>" **04**  
NFL B22K Battiscopa Soia **290**

## PEZZI SPECIALI / Trims / Formteile / Pièces spéciales / Piezas especiales / Специальные изделия



7x120 - 2<sup>3</sup>/<sub>4</sub>x47<sup>1</sup>/<sub>4</sub>" **04**  
NFL B32K Battiscopa Canapa **290**



10,5 mm **cm. 26x160**  
inch 10<sup>1</sup>/<sub>4</sub>x63"

10,5 mm **cm. 16x160**  
inch 6<sup>5</sup>/<sub>16</sub>x63"

10,5 mm **cm. 30x120**  
inch 11<sup>13</sup>/<sub>16</sub>x47<sup>1</sup>/<sub>4</sub>"

10,5 mm **cm. 20x120**  
inch 7<sup>7</sup>/<sub>8</sub>x47<sup>1</sup>/<sub>4</sub>"

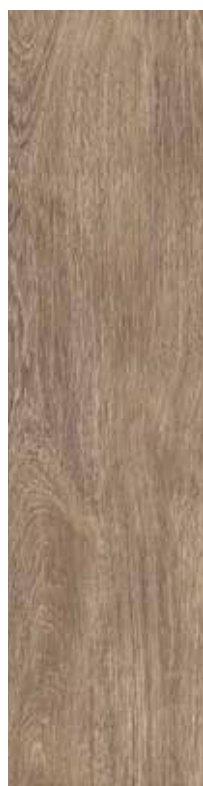
20 mm **cm. 40x120**  
inch 15<sup>3</sup>/<sub>4</sub>x47<sup>1</sup>/<sub>4</sub>"



TECHNICAL DATA Rettificato. Rectified. Rectifié. Geschliffen. Rectificado. Калиброванный



# Lino



CATALOGUE 20mm TECHNICAL DATA

↓ 20 mm

26x160 - 10<sup>1</sup>/<sub>4</sub>x63" **03**  
NFL 56RT Lino Rettificato **1110**

16x160 - 6<sup>5</sup>/<sub>16</sub>x63" **04**  
NFL 54RT Lino Rettificato **1110**

30x120 - 11<sup>13</sup>/<sub>16</sub>x47<sup>1</sup>/<sub>4</sub>" **03**  
NFL 53RT Lino Rettificato **1095**

20x120 - 7<sup>7</sup>/<sub>8</sub>x47<sup>1</sup>/<sub>4</sub>" **04**  
NFL 51RT Lino Rettificato **1095**

40x120 - 15<sup>3</sup>/<sub>4</sub>x47<sup>1</sup>/<sub>4</sub>" **01**  
NFL 52RT Lino Rett. 20mm **1150**

# Cocco

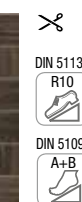


26x160 - 10<sup>1</sup>/<sub>4</sub>x63" **03**  
NFL 66RT Cocco Rett. PEI IV **1110**

16x160 - 6<sup>5</sup>/<sub>16</sub>x63" **04**  
NFL 64RT Cocco Rett. PEI IV **1110**

30x120 - 11<sup>13</sup>/<sub>16</sub>x47<sup>1</sup>/<sub>4</sub>" **03**  
NFL 63RT Cocco Rett. PEI IV **1095**

20x120 - 7<sup>7</sup>/<sub>8</sub>x47<sup>1</sup>/<sub>4</sub>" **04**  
NFL 61RT Cocco Rett. PEI IV **1095**



30x30 - 11<sup>13</sup>/<sub>16</sub>x11<sup>13</sup>/<sub>16</sub>" **10**  
NFL 555K Mosaico 5x5 Lino **3115**

30x60 - 11<sup>13</sup>/<sub>16</sub>x23<sup>5</sup>/<sub>8</sub>" **04**  
NFL 556K Mattoncino Lino **3130**

30x40 - 11<sup>13</sup>/<sub>16</sub>x15<sup>3</sup>/<sub>4</sub>" **04**  
NFL 400K Mattoncino Multicolor **3140**

30x30 - 11<sup>13</sup>/<sub>16</sub>x11<sup>13</sup>/<sub>16</sub>" **10**  
NFL 665K Mosaico 5x5 Cocco **3115**

30x60 - 11<sup>13</sup>/<sub>16</sub>x23<sup>5</sup>/<sub>8</sub>" **04**  
NFL 666K Mattoncino Cocco **3130**

30x40 - 11<sup>13</sup>/<sub>16</sub>x15<sup>3</sup>/<sub>4</sub>" **04**  
NFL 400K Mattoncino Multicolor **3140**

## PEZZI SPECIALI / Trims / Formteile / Pièces spéciales / Piezas especiales / Специальные изделия



7x120 - 2<sup>3</sup>/<sub>4</sub>x47<sup>1</sup>/<sub>4</sub>" **04**  
NFL B52K Battiscopa Lino **290**

## PEZZI SPECIALI / Trims / Formteile / Pièces spéciales / Piezas especiales / Специальные изделия



7x120 - 2<sup>3</sup>/<sub>4</sub>x47<sup>1</sup>/<sub>4</sub>" **04**  
NFL B62K Battiscopa Cocco **290**



cm. 40x120  
inch 15<sup>3</sup>/<sub>4</sub>x47<sup>1</sup>/<sub>4</sub>



Rettificato 20mm. Rectified 20mm. Rectifié 20mm. Geschliffen 20mm. Rectificado 20mm. Калиброванный 20mm.



40x120 - 15<sup>3</sup>/<sub>4</sub>x47<sup>1</sup>/<sub>4</sub> 01 20 mm  
**NFL 12RT Orzo Rett. 20mm 1150**  
 40x120 - 15<sup>3</sup>/<sub>4</sub>x47<sup>1</sup>/<sub>4</sub> 01 20 mm  
**NFL 02RT Avena Rett. 20mm 1150**  
 40x120 - 15<sup>3</sup>/<sub>4</sub>x47<sup>1</sup>/<sub>4</sub> 01 20 mm  
**NFL 52RT Lino Rett. 20mm 1150**  
 40x120 - 15<sup>3</sup>/<sub>4</sub>x47<sup>1</sup>/<sub>4</sub> 01 20 mm  
**NFL 32RT Canapa Rett. 20mm 1150**



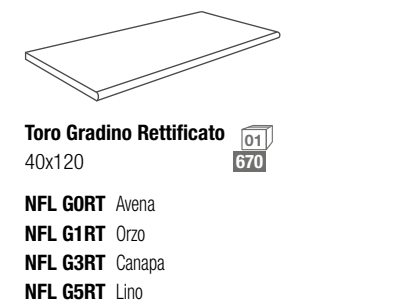
**PEZZI SPECIALI WELLNESS ON DEMAND\*** 2 0 M M

Special coordinated pieces / Zusammenstellbare Formteile / Pièces spéciales coordonnées / Piezas especiales coordinad / Специальные сочетающиеся изделия



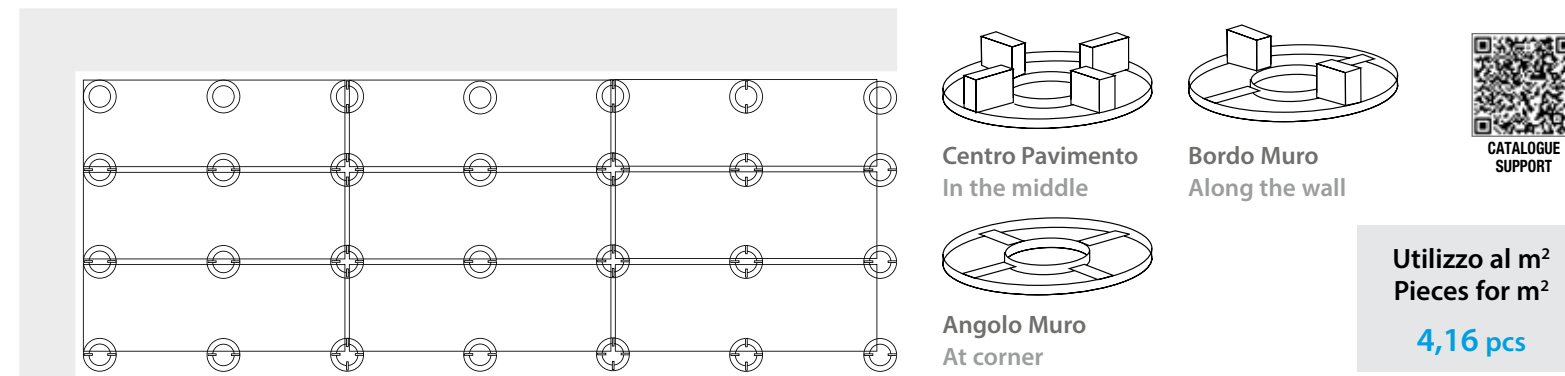
**PEZZI SPECIALI ON DEMAND\*** 2 0 M M

Special coordinated pieces / Zusammenstellbare Formteile / Pièces spéciales coordonnées / Piezas especiales coordinad / Специальные сочетающиеся изделия



\* I pezzi speciali "on demand" vengono realizzati solo su richiesta con consegna 6 settimane. / Special "on demand" pieces are available only on request and have a 6-week lead-time. / Die Formteile „On Demand“ werden nur auf Anfrage mit einer Lieferfrist von 6 Wochen gefertigt. / Les pièces spéciales On Demand sont réalisées uniquement sur demande. Délai de livraison: 6 semaines. / Las piezas especiales "on demand" se fabricarán únicamente bajo pedido y se entregarán al cabo de seis semanas. / Специальные изделия "on demand" выпускаются только по заказу, срок поставки составляет 6 недель.

**Esempio di applicazione / Application Example / Anwendungsbeispiel / Exemple d'application / Ejemplo de aplicación / Пример укладки**



**SUPPORTO REGOLABILE AUTOLIVELLANTE**

Paving support  
Verstellbare Stütze  
Support réglable  
Soporte regulable  
Регулируемая опора

**SUPPORTO REGOLABILE**

Paving support  
Verstellbare Stütze  
Support réglable  
Soporte regulable  
Регулируемая опора

**SUPPORTO FISSO**

Paving support with fixed height  
Feststehende Stütze  
Support fixe  
Soporte fijo  
Фиксированная опора



PG NFLFT



COCCO



ORZO



AVENA



SOIA



CANAPA



LINO



SCA-NFL

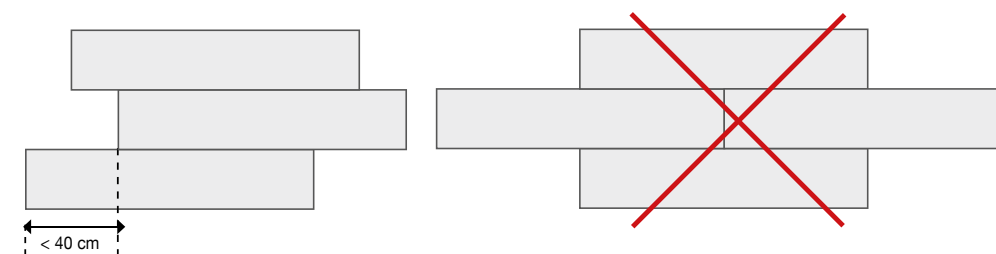
COORDINAMENTO MKT: NOVABELL SpA  
 PROGETTO GRAFICO: ADVERTFACTORY.IT  
 STAMPA: EPHEMERIS  
 GENNAIO 2017

**IMBALLI e PESI /**

Packaging and weights / Verpackungen und Gewichte / Emballages et poids / Embalajes y pesos / Упаковка и вес

	SCATOLA / BOX				PALLET			
	pz	m2	kg	box	m2	kg	≡	
26x160	3	1,248	28,3	24	29,952	680	10,5	
16x160	4	1,024	23,0	60	61,440	1380	10,5	
30x120	3	1,080	24,0	24	25,920	577	10,5	
20x120	4	0,960	21,2	40	38,400	849	10,5	
40x120	1	0,480	23,0	48	23,040	1103	20	

**Posa Sfalsata: disposizione consigliata / OFFSET PATTERN:** recommended arrangement / **HALBSTEINVERBAND:** Empfohlene Anordnung / **POSE DÉCALÉE:** disposition conseillée / **COLOCACIÓN A ROMPEJUNTA:** disposición aconsejada. / **УКЛАДКА В РАЗБЕЖКУ:** рекомендованный вариант.



Nella posa "a correre", si consiglia di sfalsare i moduli distanziandoli non oltre i 40 cm.  
 In the case of "random" patterns, we recommend offsetting the modules, but by no more than 40 cm.  
 Bei versetzter Verlegung wird empfohlen, die Module in einem Versatz von maximal 40 cm zu verlegen.  
 Dans la pose «à l'anglaise», il est conseillé de décaler les modules en les espaçant de moins de 40 cm.  
 En la colocación "corrida" se aconseja colocar las piezas a rompejunta distanciándolas no más de 40 cm.  
 В случае укладки в разбежку рекомендуется смещать модули не более чем на 40 см.



**LEED® CERTIFICATION COMPLIANT**

**NATURAL FEELING E' UN PRODOTTO CON PARTICOLARI CARATTERISTICHE DI ECOSOSTENIBILITA', CHE CONTRIBUISCE ALL'OTTENIMENTO DEI CREDITI PER LA CERTIFICAZIONE LEED (LEADERSHIP IN ENERGY AND ENVIROMENTAL DESIGN).**



NATURAL FEELING IS A PRODUCT WITH PARTICULAR ENVIRONMENTAL SUSTAINABILITY CHARACTERISTICS, THAT HELPS IN OBTAINING POINTS FOR LEED (LEADERSHIP IN ENERGY AND ENVIRONMENTAL DESIGN) CERTIFICATION.

NATURAL FEELING IST EIN AUSGESPROCHEN UMWELTFREUNDLICHES PRODUKT, DAS ZUM ERREICHEN DER PUNKTE FÜR DIE ZERTIFIZIERUNG NACH LEED (LEADERSHIP IN ENERGY AND ENVIROMENTAL DESIGN) BEITRÄGT.

LA SERIE NATURAL FEELING PRESENTE DE CARACTERISTIQUES SPECIFIQUES DE DEVELOPPEMENT DURABLE; ELLE CONTRIBUS A OBTENIR DE CREDITS POUR LA CERTIFICATION LEED (LEADERSHIP IN ENERGY AND ENVIROMENTAL DESIGN).

NATURAL FEELING ES UN PRODUCTO CON CARACTERÍSTICAS DE SOSTENIBILIDAD MEDIOAMBIENTAL ESPECIALES, QUE FACILITA LA OBTENCIÓN DE PUNTOS PARA LA CERTIFICACIÓN LEED (LEADERSHIP IN ENERGY AND ENVIRONMENTAL DESIGN) LIDERAZGO EN ENERGÍA Y DISEÑO AMBIENTAL.


NATURAL FEELING - ЭТО ПРОДУКЦИЯ СО СПЕЦИАЛЬНЫМИ ХАРАКТЕРИСТИКАМИ ЭКОЛОГИЧЕСКОЙ ЭФФЕКТИВНОСТИ, ПОЗВОЛЯЮЩАЯ ПОЛУЧАТЬ ЗАЧЕТНЫЕ ОЧКИ ДЛЯ СЕРТИФИКАТА LEED (LEADERSHIP IN ENERGY AND ENVIROMENTAL DESIGN).



## The International reference standards: ANSI - ASTM **NATURALE**

The values of the main technical characteristics measured on our products, compared with international standards, are clearly shown and reproduced on our contractual documents (catalogs, price lists, etc.).

The values given in this document are common to groups of articles or series of our tiles and therefore are to be used as a guide for a first orientation in choosing the product. If required, the specific values for a given product and a determined supply can be provided depending on its intended use, when formally brought to our attention by notice in writing.

Characteristics and Test methods 	Requirements ANSI A 137.1	Our general values
Determination of water absorption - (ASTM C 373)	Average value $E_b \leq 0,5\%$	Average value $\leq 0,5\%$
<b>Classification</b>	<b>Definition § 3.0</b>	<b>Porcelain tiles</b>
		<b>Physical properties</b>
Breaking strength - (ASTM C 648)	Average $\geq 250$ lbf (1.11 kN) Individual $\geq 225$ lbf (1.00 kN)	Complies
Visible Abrasion - (ASTM C 1027)	As reported	PEI IV : Cocco PEI V : Avena, Orzo, Canapa, Soia, Lino
Thermal shock resistance - (ASTM C 428)	Pass	Complies
Crazing resistance - (ASTM C 424)	Pass	Complies
Resistance to freeze/thaw cycling - (ASTM C 1026)	As reported	Resistant
<b>DCOF Resistance</b> - (ANSI A 137.1 Section 9.6)	$\geq 0.42$ <sup>(1)</sup>	DCOF $\geq 0.42$
Bond strength - (ASTM C 482)	$\geq 50$ psi (0.34 MPa)	$> 1$ MPa
Color Uniformity - (ASTM C 609 and ANSI A 137.1 section 9.3) <sup>(2)</sup>	V0 - 3 Juds	See the specific section
		<b>Chemical properties</b>
Chemical resistance - (ASTM C 650)	As reported	Resistant
Stain resistance - (ASTM C 1378)	As reported	Resistant
		<b>Dimensions - Calibrated tiles</b>
Dimensions - (ASTM C 499) - (ASTM C 485) - (ASTM C 502)	See ANSI A 137.1 - Tab.10	Complies
		<b>Dimensions - Rectified tiles</b>
Dimensions - (ASTM C 499) - (ASTM C 485) - (ASTM C 502)	See ANSI A 137.1 - Tab.10	Complies

(1) For level interior spaces expected to be walked upon when wet - (2) For V0 tiles only



**NATURAL FEELING  
NATURALE**



Utilizzare il **QR CODE** per scaricare le schede tecniche



Use the **QR CODE** to download data sheets



**QR CODE** benutzen um die technische datenblätter runter zu laden



**NATURAL FEELING  
20MM**



Veillez utiliser le **QR CODE** pour télécharger les fiches techniques



Utilizar el **QR CODE** para descargar las fichas técnicas



Используйте QR-код для скачивания технических характеристик




<http://www.ongreening.com/en/Manufacturers/Details/9483>

## The international reference standards: ISO - EN

The values of the main technical characteristics measured on our products, compared with international standards, are clearly shown and reproduced on our contractual documents (catalogs, price lists, etc.).

The values given in this document are common to groups of articles or series of our tiles and therefore are to be used as a guide for a first orientation in choosing the product. If required, the specific values for a given product and a determined supply can be provided depending on its intended use, when formally brought to our attention by notice in writing.

Characteristics and Test methods 	Requirements EN 14411 <sup>(1)</sup> - G/ISO 13006 <sup>(2)</sup> - G	Our general values
Determination of water absorption - (ISO 10545-3)	Average value $E_b \leq 0,5\%$ / Individual maximum 0,6%	Average value and individual maximum $< 0,5\%$
<b>Classification</b>	<b>Definition § 3.2 and § 3.7</b>	<b>BI<sub>a</sub> - Porcelain tiles</b>
		<b>Physical properties</b>
Modulus of rupture - (ISO 10545-4)	Average $\geq 35$ N/mm <sup>2</sup>	$\geq 35$ N/mm <sup>2</sup>
Breaking strength - (ISO 10545-4)	Average $\geq 1300$ N for thickness $\geq 7,5$ mm Average $\geq 700$ N for thickness $< 7,5$ mm	Complies
Abrasion resistance - (ISO 10545-7)	Abrasion class and cycles passed	PEI IV : Cocco PEI V : Avena, Orzo, Canapa, Soia, Lino
Coefficient of linear thermal expansion (ISO 10545-8)	Declared value <sup>(1)</sup> / Test method available <sup>(2)</sup>	$< 7,1 \times 10^{-6} \text{ }^\circ\text{C}^{-1}$
Thermal shock resistance - (ISO 10545-9)	Pass according to EN ISO 10545-1 <sup>(1)</sup> / Test method available <sup>(2)</sup>	Complies
Crazing resistance - (ISO 10545-11)	Pass according to EN ISO 10545-1 <sup>(1)</sup> / Required <sup>(2)</sup>	Complies
Frost resistance - (ISO 10545-12)	Pass according to EN ISO 10545-1 <sup>(1)</sup> / Required <sup>(2)</sup>	Complies
Moisture expansion - (ISO 10545-10)	Declared value <sup>(1)</sup> / Test method available <sup>(2)</sup>	$\leq 0,2$ mm/m
Small colour differences (ISO 10545-16)	$\Delta E_{cmc} < 0,75^{(1)}$	If agreed
Impact resistance - (ISO 10545-5)	Declared value <sup>(1)</sup> / Test method available <sup>(2)</sup>	COR $> 0,75$
Reaction to fire	Class A1 or A1 <sub>FL</sub> <sup>(1)</sup>	A1 <sub>FL</sub> Classified Without Testing (CWT) - 96/603
		<b>Chemical properties</b>
Chemical resistance - (GL) (ISO 10545-13)		
Resistance to low and high concentrations of acids and alkalis	Declared value <sup>(1)</sup> / Manufacturer is to state classification <sup>(2)</sup>	Resistant (see "Maintenance and care" section)
Resistance to household chemicals and swimming pool salts	Minimum class B	G A
Resistance to staining (ISO 10545-14)	Minimum class 3	5 (see "Maintenance and care" section)
Release of dangerous substances (ISO 10545-15)	Declared value <sup>(1)</sup> / Test method available <sup>(2)</sup>	Pb $< 0,1$ / Cd $< 0,01$ mg/dm <sup>2</sup>
		<b>Dimensions and surface quality</b>
Dimensions - (ISO 10545-2)	See ANNEX G	Complies
Surface quality - (ISO 10545-2 § 7)	<b>A minimum of 95% of the tiles shall be free from visible defects that would impair the appearance of a major area of tiles</b>	Complies


(1) Requirements according to EN 14411


(2) Requirements according to ISO 13006


Test methods	Requirements and references	Our general values
Determination of anti-slip properties - Workrooms and fields of activities with raised slip danger, walking method - Ramp test (DIN 51130) - Germany	BGR / ASR From R9 to R13	<b>R 10</b>
Determination of anti-slip properties. - Wet-loaded barefoot areas - Walking method - Ramp test (DIN 51097) - Germany	GUV-I 8527 A - B - C	<b>A+B</b>
Dynamic Coefficient Friction wet and dry condition (BCR - ex BCRA) - Italy	DM n. 236 / 1989 $\mu > 0,40$	$\mu > 0,40$


 La tabella in italiano con i dati tecnici è scaricabile su [www.novabell.it](http://www.novabell.it)

 The English language technical specification for each collection can be downloaded from [www.novabell.it](http://www.novabell.it)

 Die Tabelle in deutscher Sprache kann auf [www.novabell.it](http://www.novabell.it) heruntergeladen werden.

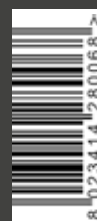
 Si vous le souhaitez, téléchargez le tableau contenant les données techniques en français en allant sur [www.novabell.it](http://www.novabell.it)

 Descargue la tabla de datos técnicos en español, disponible en [www.novabell.it](http://www.novabell.it)

 Таблицу на русском языке с техническими данными можно скачать с сайта [www.novabell.it](http://www.novabell.it)



CAT-NFL



CATALOGUE



NOVABELL SpA CERAMICHE ITALIANE  
via Molino, 1 - 42014 Roteglia (RE), Italia  
T +39 0536 86 11 11 - F +39 0536 85 12 05  
info@novabell.it - export@novabell.it  
[www.novabell.it](http://www.novabell.it)

